

CORNER RECORD
WARRICK COUNTY



DESCRIPTION: CENTER OF SECTION

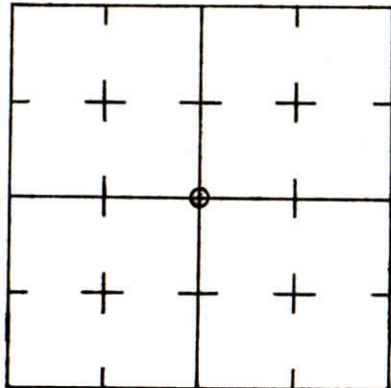
SW CORNER SW¹/₄ NE¹/₄

SECTION 15, T. 6 S. R. 9 W.

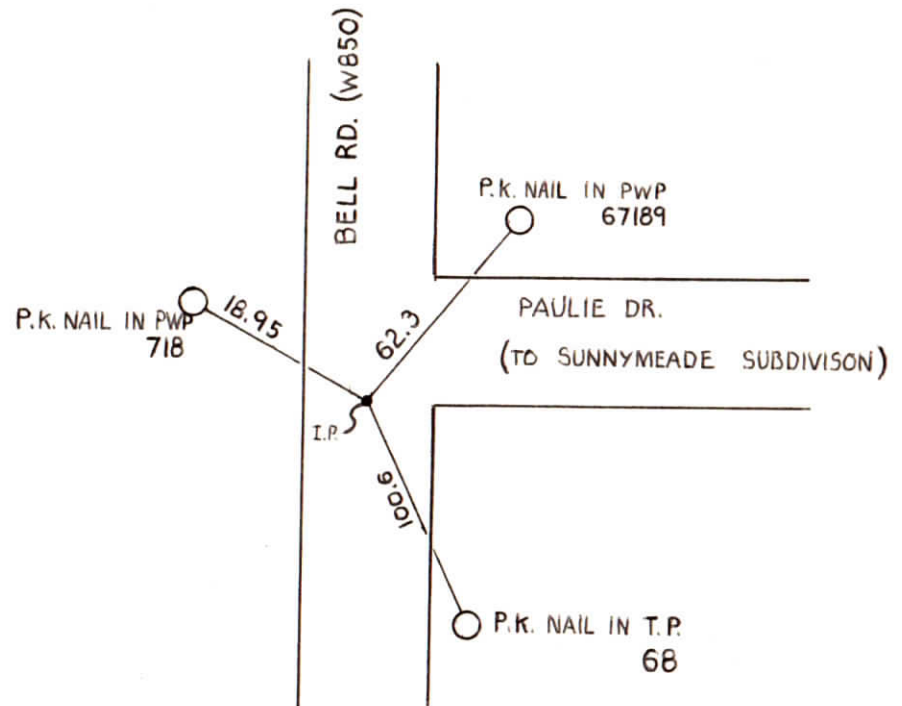
2nd PRINCIPLE MERIDIAN

WARRICK COUNTY SURVEYOR
MICHAEL IRVIN

INDICATE CORNER REFERENCED



DESCRIBE CORNER REFERENCED



STATE PLANE COORDINATE DATA

INDIANA ZONE: WEST

X _____

Y _____

ESTABLISHED BY:

APPROVED BY

NOT VERIFIED

DATE
6-18-73

REFERENCED BY:

DATE

~~(SE corner NW $\frac{1}{4}$) + SW corner NE $\frac{1}{4}$ +
NE corner SW $\frac{1}{4}$ + NW corner SE $\frac{1}{4}$ sec 15-65-9w~~

~~000029~~

Type of Monument: I.P. (existing)

Date referenced: 6-18-73

referenced by: SWC

6-24-74
JRT



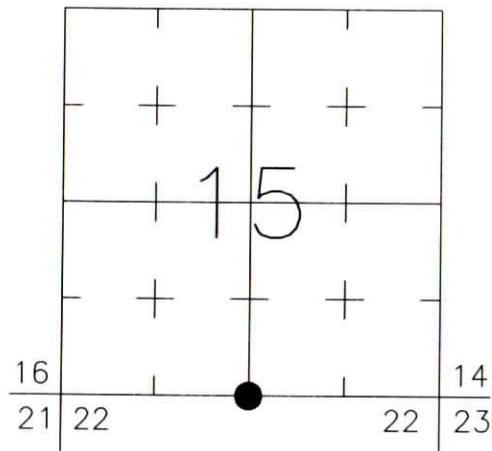
CORNER RECORD WARRICK COUNTY



DESCRIPTION:
SOUTHWEST CORNER SOUTHEAST QUARTER
 SECTION 15, T. 6 S., R. 9 W.
 2nd PRINCIPLE MERIDIAN

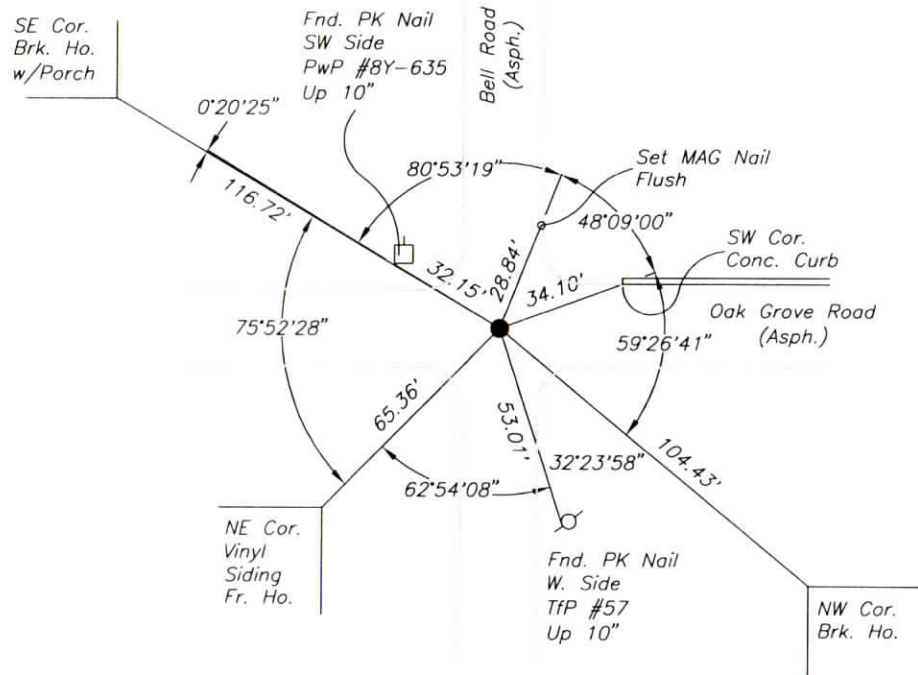
WARRICK COUNTY SURVEYOR
 KARAN HARGRAVE-BARNHILL

INDICATE CORNER REFERENCED:



MONUMENT TYPE: REBAR (SLIGHTLY BENT)
 SIZE: 5/8" DIA.
 DEPTH/HEIGHT: 1" BELOW GRADE
 REFERENCE TIE DRAWING:

FOR NOTES ON CORNER HISTORY SEE REVERSE.



STATE PLANE COORDINATE DATA:
 INDIANA WEST ZONE, NAD 83 (1997)
 U.S. SURVEY FEET

X _____
 Y _____

COORDINATES ESTABLISHED BY:

APPROVED BY:

DATE:

REFERENCED BY: D.DREES/C.BINKLEY

DATE: 9/6/02

APPROVED BY: P.JONES, RLS#9600016

DATE: 9/11/02

CORNER FILE CODE:
 T6S-R9W-N-15

CORNER HISTORY:

CORNER FILE CODE:
T6S-R9W-N-15

ORIGINAL USPLS SURVEY: Corner established by Jacob Fowler, Dec. 21(?), 1805 "Post" (@39.92ch/79.84ch)

COUNTY SURVEYOR'S BOOKS: Book 1 P. 125: John C. Frary WCS Nov. 4, 1859 Stone Marked"

Book 1 P. 252: O.B.Pasco WCS Nov. 26, 1866 (Mon. not identified)"

OTHER SURVEYS AND PLATS: "Corner Record" cards show a 1983 ref. to a 5/8" IP, and a 1990 ref. to a 5/8" IP taken from the plat of LaBelle Manor.

A plat of survey by Rodney K. Young dated July 30, 1992 (Surv. File 1, Card 360) shows a 3/4" IP 1" below grade.

VERIFICATION OF CORNER POSITION: September, 2002: The 5/8" rebar shown was found in place, slightly bent. Its position is generally consistent with previous reference ties (+/- 1'). It appears likely that the 1990 reference tie distance of 33.08' from a curb corner should have been 34.08', which would match very closely the other two 1990 reference ties. If so, this would indicate a position approximately 0.1' south and 0.2' east of the rebar as found. Considering the possible movement of utility poles over a period of years, however, the rebar was referenced in position as found.

Perry E. Jones 9/11/02

CORNER RECORD
WARRICK COUNTY

DESCRIPTION:

NE CORNER NE 1/4 NW 1/4

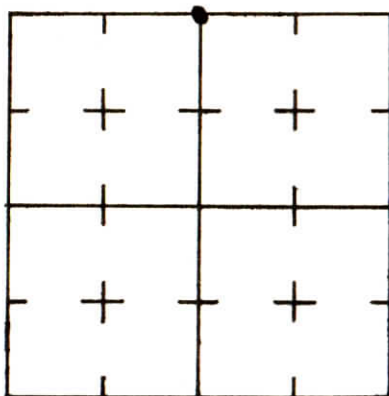
SECTION 15, T. 6 S. R. 9 W.

2nd PRINCIPAL MERIDIAN

WARRICK COUNTY SURVEYOR
MICHAEL F. FELDBUSCH, L.S.

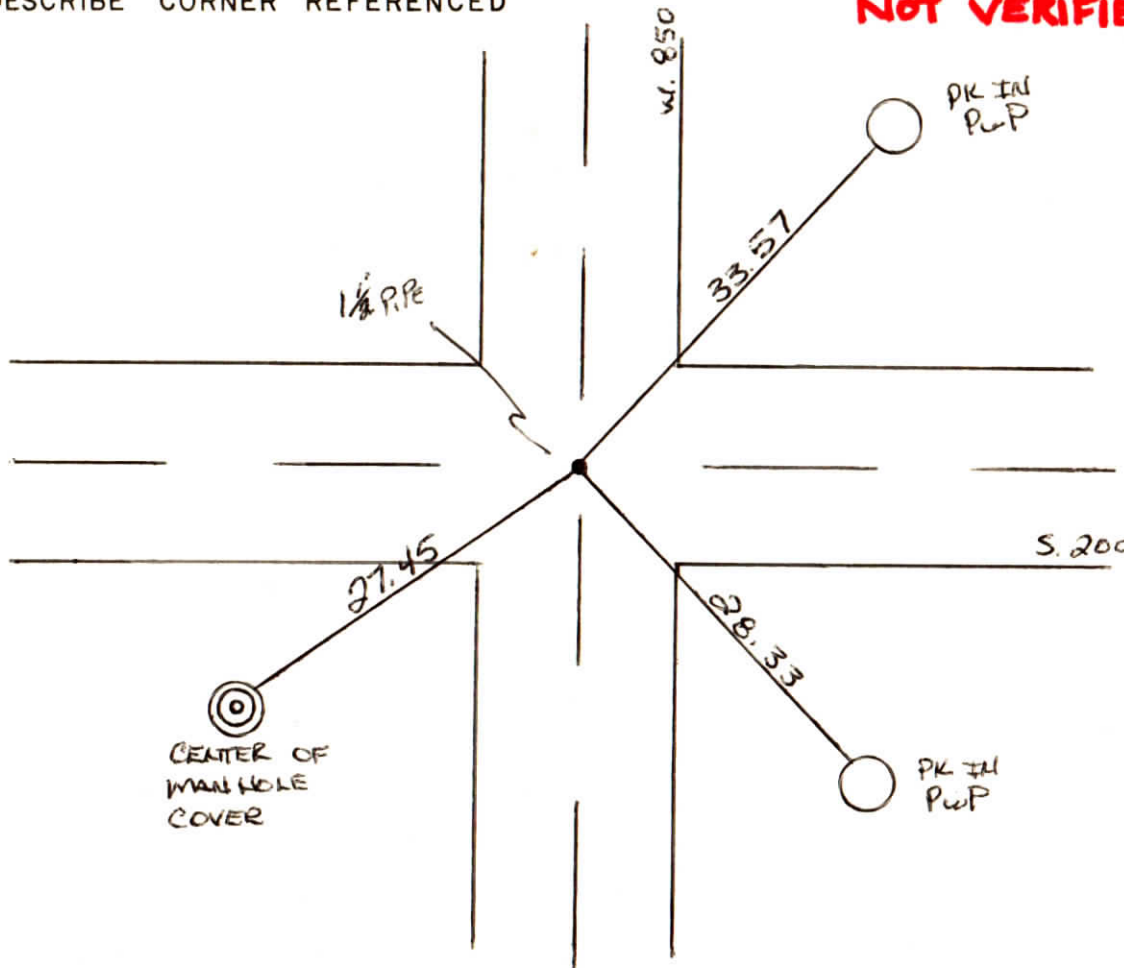


INDICATE CORNER REFERENCED



DESCRIBE CORNER REFERENCED

NOT VERIFIED



STATE PLANE COORDINATE DATA

INDIANA ZONE: WEST

X _____

Y _____

ESTABLISHED BY:

APPROVED BY

DATE

REFERENCED BY:

DATE

Hay Beck

5-30-84

CORNER RECORD
WARRICK COUNTY



DESCRIPTION:

NW CORNER NW 1/4 NE 1/4

SECTION 15, T. 16 S. R. 9 W.

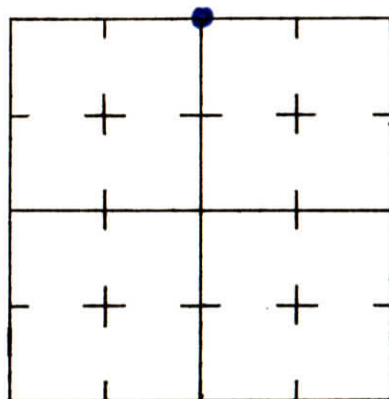
2nd PRINCIPLE MERIDIAN

BELL TERRACE # 266

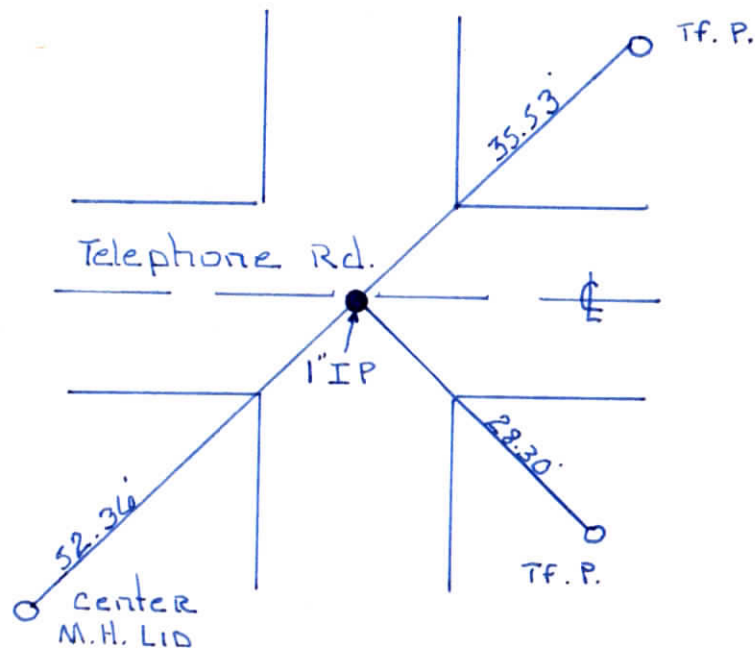
WARRICK COUNTY SURVEYOR

MICHAEL IRVIN

INDICATE CORNER REFERENCED



DESCRIBE CORNER REFERENCED



STATE PLANE COORDINATE DATA

INDIANA ZONE: WEST

X _____

Y _____

ESTABLISHED BY:

APPROVED BY

DATE

REFERENCED BY:

DATE

Edwin O Boyd

Aug 10, 1977

CORNER RECORD
WARRICK COUNTY

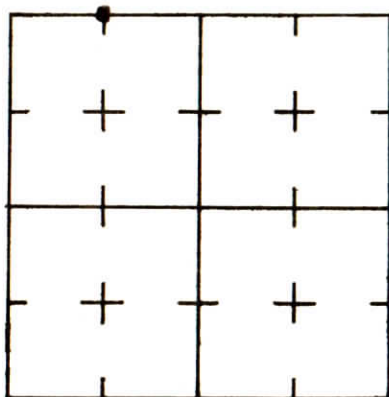
DESCRIPTION:

NE CORNER NW¹/₄ NW¹/₄
SECTION 15, T. 6 S. R. 9 W.
2nd PRINCIPAL MERIDIAN

WARRICK COUNTY SURVEYOR
MICHAEL F. FELDBUSCH, L.S.

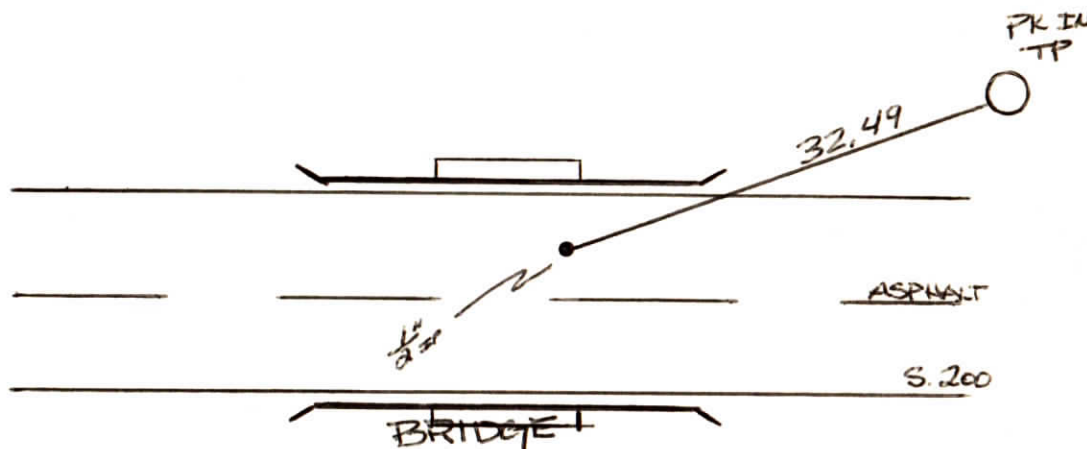


INDICATE CORNER REFERENCED



DESCRIBE CORNER REFERENCED

NOT VERIFIED



STATE PLANE COORDINATE DATA

INDIANA ZONE: WEST

X _____

Y _____

ESTABLISHED BY:

APPROVED BY

DATE

REFERENCED BY:

DATE

Gay Beck

5-30-84

**CORNER RECORD
WARRICK COUNTY**



DESCRIPTION :

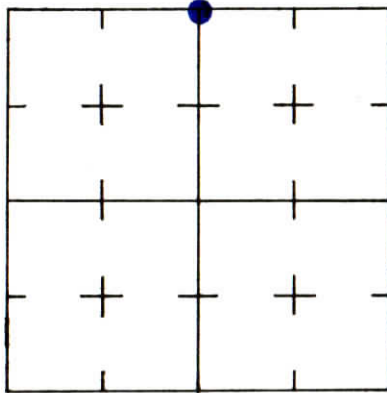
NW CORNER NW 1/4 NE 1/4

SECTION 15, T. 6 S. R. 2 W.

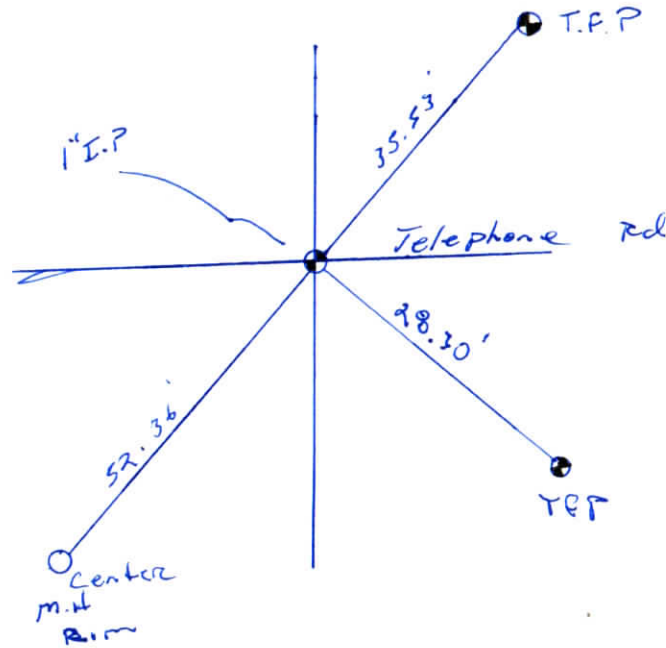
2nd PRINCIPLE MERIDIAN

**WARRICK COUNTY SURVEYOR
KARAN HARGRAVE-BARNHILL**

INDICATE CORNER REFERENCED



DESCRIBE CORNER REFERENCED



STATE PLANE COORDINATE DATA

INDIANA ZONE: WEST

X _____

Y _____

ESTABLISHED BY:

APPROVED BY

DATE

REFERENCED BY:

DATE

Edwin O Boyd

July 20 77

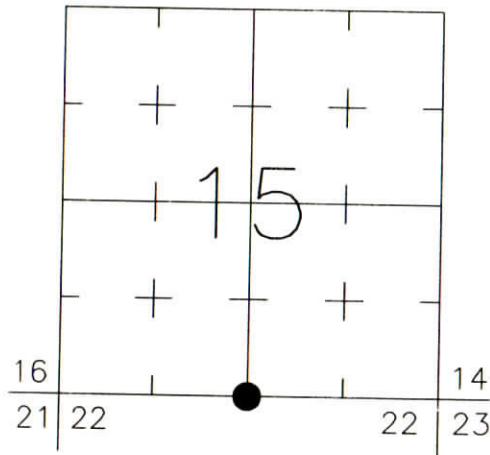
CORNER RECORD WARRICK COUNTY



DESCRIPTION:
SOUTHWEST CORNER SOUTHEAST QUARTER
SECTION 15, T. 6 S., R. 9 W.
 2nd PRINCIPAL MERIDIAN

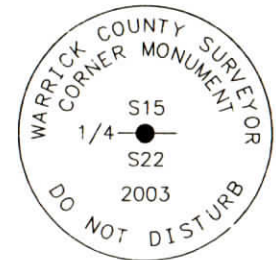
WARRICK COUNTY SURVEYOR
 KARAN HARGRAVE-BARNHILL

INDICATE CORNER REFERENCED:



MONUMENT TYPE: ALUMINUM DISK
 SIZE: 4" DIAM.
 DEPTH/HEIGHT: 1" BELOW PVMT. GRADE
 REFERENCE TIE DRAWING:

FOR NOTES ON CORNER HISTORY SEE REVERSE.



Stamping
on Disk

STATE PLANE COORDINATE DATA:
 INDIANA WEST ZONE, NAD 83 (1997)
 U.S. SURVEY FEET

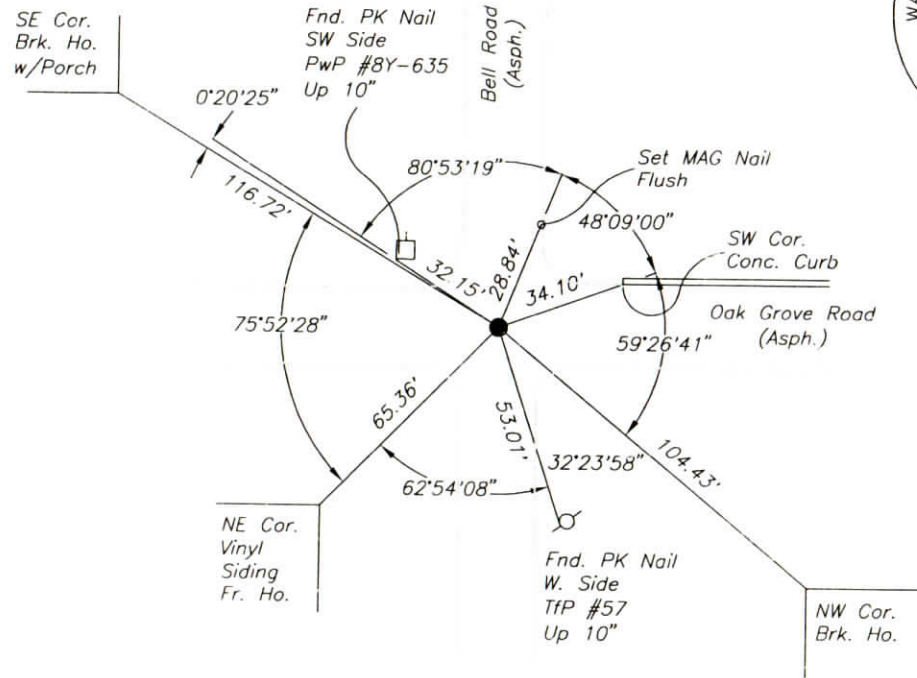
X _____

Y _____

COORDINATES ESTABLISHED BY:

APPROVED BY:

DATE:



REFERENCED BY: D.DREES/C.BINKLEY DATE: 9/6/02
 DISK SET 10/28/03 D.DREES/G.M.BURRESS
 APPROVED BY: P.JONES, RLS#9600016 DATE: 10/29/03

CORNER FILE CODE:
 T6S-R9W-N-15

CORNER HISTORY:

CORNER FILE CODE:
T6S-R9W-N-15

ORIGINAL USPLS SURVEY: Corner established by Jacob Fowler, Dec. 21(?), 1805 "Post" (@39.92ch/79.84ch)

COUNTY SURVEYOR'S BOOKS: Book 1 P. 125: John C. Frary WCS Nov. 4, 1859 Stone Marked"

Book 1 P. 252: O.B.Pasco WCS Nov. 26, 1866 (Mon. not identified)"

OTHER SURVEYS AND PLATS: "Corner Record" cards show a 1983 ref. to a 5/8" IP, and a 1990 ref. to a 5/8" IP taken from the plat of LaBelle Manor.

A plat of survey by Rodney K. Young dated July 30, 1992 (Surv. File 1, Card 360) shows a 3/4" IP 1" below grade.

VERIFICATION OF CORNER POSITION: September, 2002: A 5/8" rebar was found in place, slightly bent. Its position was generally consistent with previous reference ties (+/- 1'). It appears likely that the 1990 reference tie distance of 33.08' from a curb corner should have been 34.08', which would match very closely the other two 1990 reference ties. If so, this would indicate a position approximately 0.1' south and 0.2' east of the rebar as found. Considering the possible movement of utility poles over a period of years, however, the rebar was referenced in position as found. October 28, 2003: the bent rebar was removed and replaced with the disk shown.

Perry E. Jones 10/29/03

CORNER RECORD WARRICK COUNTY

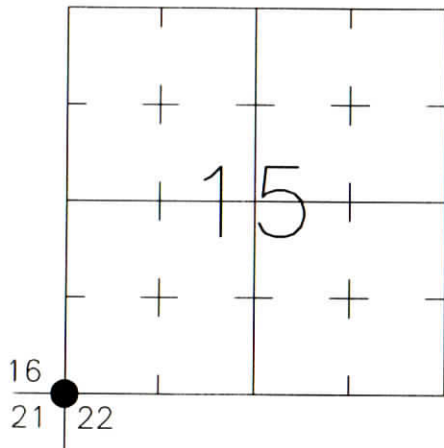


DESCRIPTION:

SOUTHWEST CORNER _____
SECTION 15, T. 6 S., R. 9 W.
2nd PRINCIPLE MERIDIAN

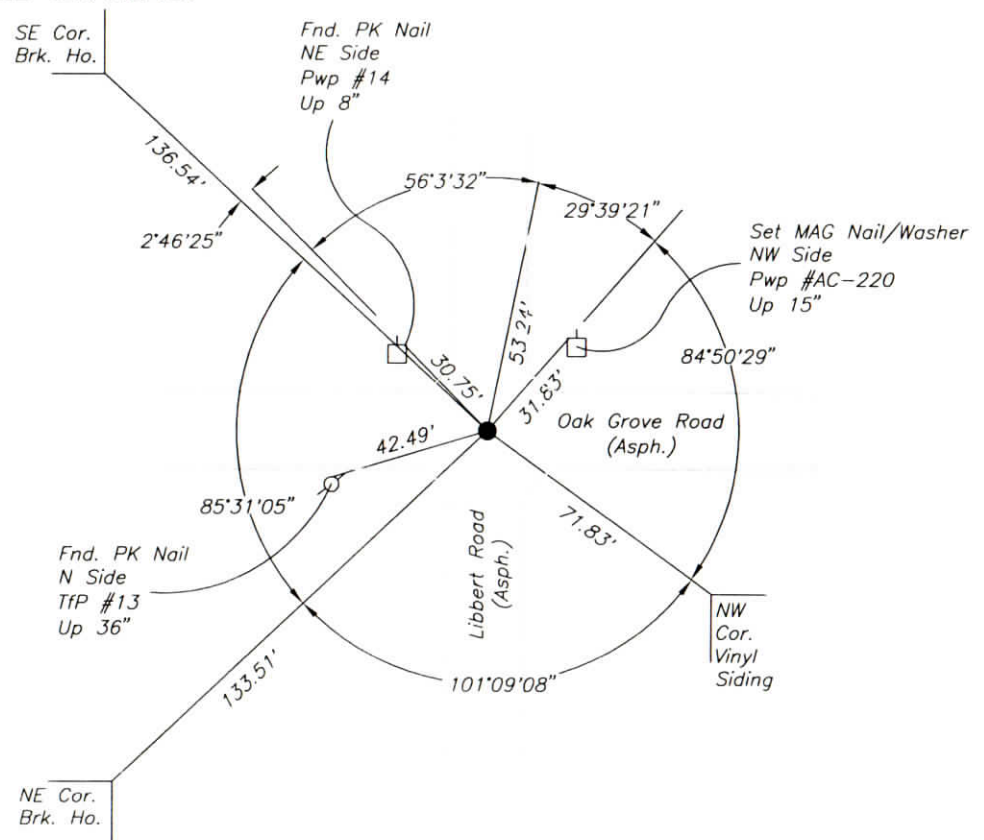
WARRICK COUNTY SURVEYOR
KARAN HARGRAVE-BARNHILL

INDICATE CORNER REFERENCED:



MONUMENT TYPE: IRON PIPE
SIZE: 1-1/2" O.D.
DEPTH/HEIGHT: 8" BELOW ASPH. GRADE
REFERENCE TIE DRAWING:

FOR NOTES ON CORNER HISTORY SEE REVERSE.



STATE PLANE COORDINATE DATA:
INDIANA WEST ZONE, NAD 83 (1997)
U.S. SURVEY FEET

X _____

Y _____

COORDINATES ESTABLISHED BY:

APPROVED BY:

DATE:

REFERENCED BY: D.DREES/C.BINKLEY

DATE: 9/6/02

APPROVED BY: P.JONES, RLS#9600016

DATE: 9/10/02

CORNER FILE CODE:
T6S-R9W-N-13

CORNER HISTORY:

CORNER FILE CODE:
T6S-R9W-N-13

ORIGINAL USPLS SURVEY: Corner established by Jacob Fowler, Dec. 20, 1805 "Post".

COUNTY SURVEYOR'S BOOKS: Book 1 P. 30: Isaac Adams WCS Sept. 1, 1854 "Wood Post"

Book 3 P. 161: Louis Meyer WCS March 21, 1911 "Old Corner"

OTHER SURVEYS AND PLATS: "Corner Record" card shows a 1973 reference (monument not identified). "Corner Code System" card shows undated ref. to 1" solid pin (1/2" I.P.?).

An Exempt Division by William Y. Bivins dated 2/11/94 shows a 1" pipe found.

A plat of survey by Donald Ray Adler (Doc. 1995R-211) shows a 1" pipe found.

VERIFICATION OF CORNER POSITION: September, 2002: The 1-1/2" O.D. Iron Pipe was found in place, reasonably consistent with previous reference ties (+/- 0.4').

Perry E. Jones 9/10/02

CORNER RECORD
WARRICK COUNTY

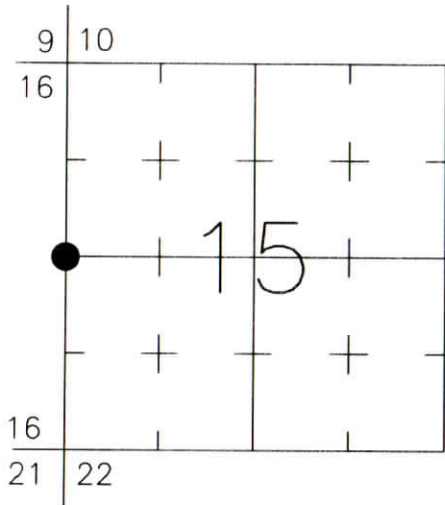


DESCRIPTION:
SOUTHWEST CORNER NORTHWEST QUARTER
SECTION 15, T. 6 S., R. 9 W.
2nd PRINCIPAL MERIDIAN

WARRICK COUNTY SURVEYOR
KARAN HARGRAVE-BARNHILL

FOR NOTES ON CORNER HISTORY SEE REVERSE.

INDICATE CORNER REFERENCED:



MONUMENT TYPE: REBAR
SIZE: 3/4" DIA.
DEPTH/HEIGHT: 4" BELOW GRADE
REFERENCE TIE DRAWING:

STATE PLANE COORDINATE DATA:
INDIANA WEST ZONE, NAD 83 (1997)
U.S. SURVEY FEET

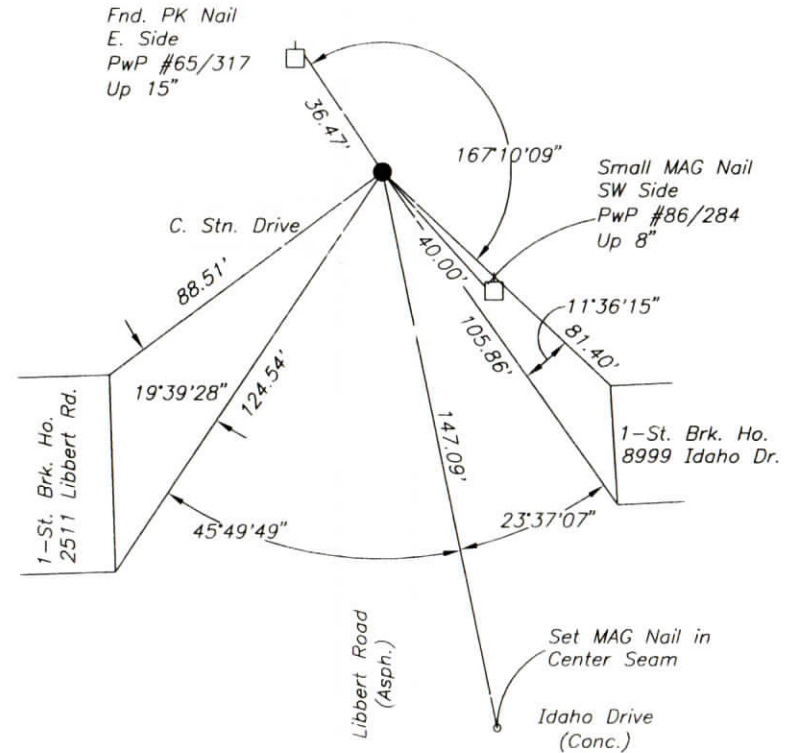
X ---

Y ---

COORDINATES ESTABLISHED BY:

APPROVED BY:

DATE:



REFERENCED BY: R.HAHN/K.KLEIN

DATE: 9/5/02

APPROVED BY: P.JONES, RLS#9600016

DATE: 9/9/02

CORNER FILE CODE:
T6S-R9W-L-13

CORNER HISTORY:

CORNER FILE CODE:
T6S-R9W-L-13

ORIGINAL USPLS SURVEY: Corner established by Jacob Fowler, Dec., 1805 (missing notes).

COUNTY SURVEYOR'S BOOKS: Book 1 P. 30: Isaac Adams WCS Sept. 1, 1854 "Wood Post".

Book 1 P. 96: John C. Frary WCS Mar. 30, 1858 mentions "Former survey by Adams" along Section Line.

OTHER SURVEYS AND PLATS: "Corner Code System" card includes an undated ref. to a 1" solid I.P.

A 5/8" I.P. is shown on the 1987 plat of Westwood Section "C" Part 3.

A 3/4" Rebar was found and tied in to the Telephone Road Route Survey (Bernardin-Lochmueller & Assoc.) 2002.

VERIFICATION OF CORNER POSITION: September, 2002: The 3/4" rebar shown was found in place. Only one of the reference ties shown on the Corner Code System card was found; the distance measured was 0.49' short of record (possibly due to displacement of the power pole). The measured distance to the center seam of Idaho Drive agreed reasonably well with plat dimensions from Westwood Section "C" Part 3.

Perry E. Jones 9/9/02

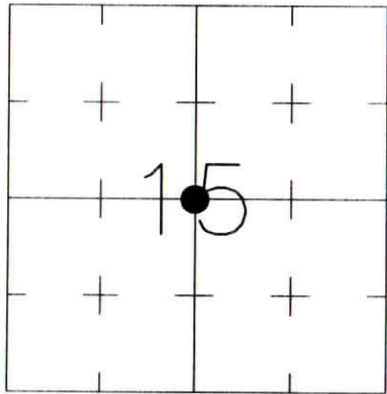
CORNER RECORD WARRICK COUNTY



DESCRIPTION:
 SOUTHWEST CORNER NORTHEAST QUARTER
 SECTION 15, T. 6 S., R. 9 W.
 2nd PRINCIPAL MERIDIAN

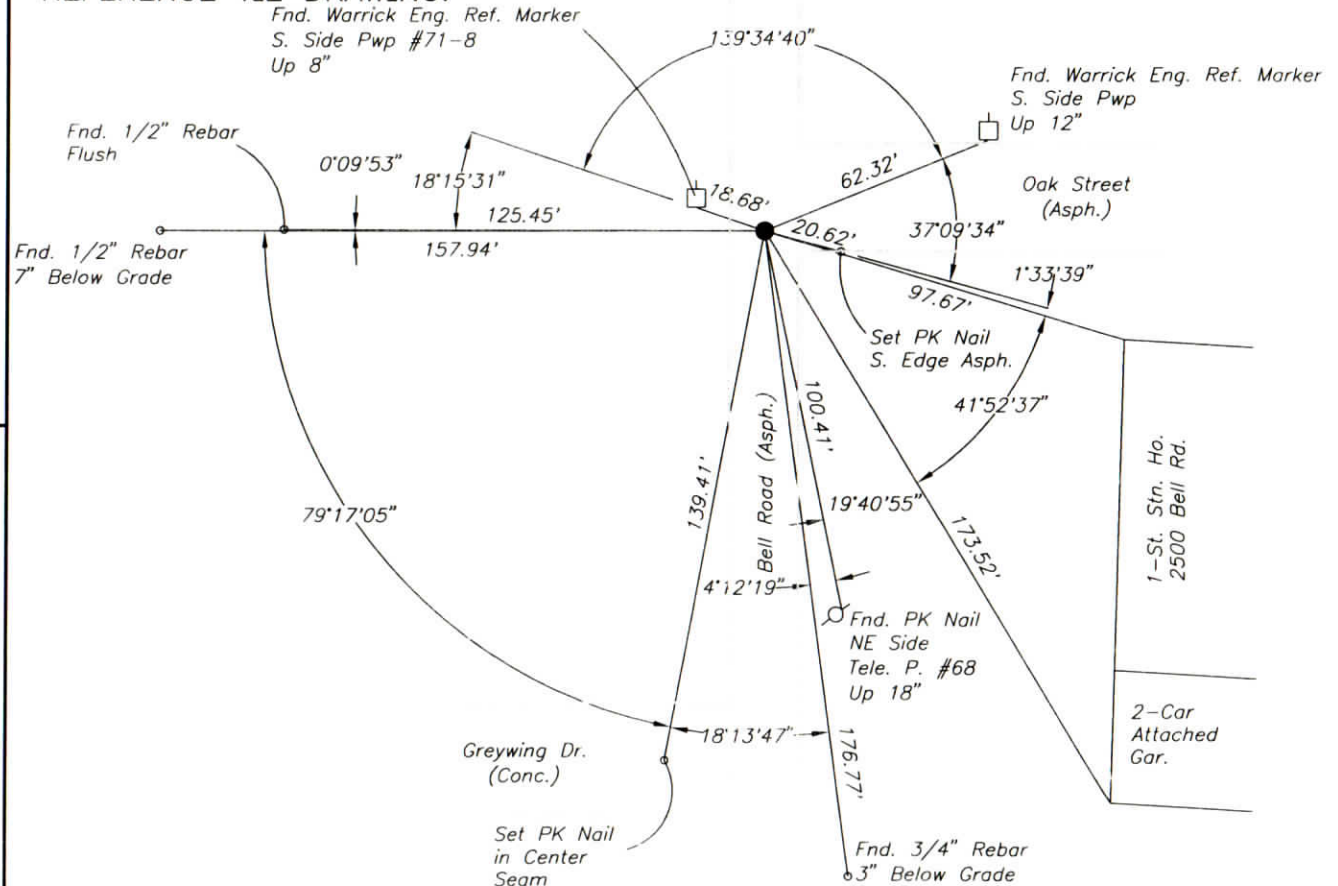
WARRICK COUNTY SURVEYOR
 KARAN HARGRAVE-BARNHILL

INDICATE CORNER REFERENCED:



FOR NOTES ON CORNER HISTORY SEE REVERSE.

MONUMENT TYPE: BARN NAIL
 SIZE:
 DEPTH/HEIGHT: 6" BELOW GRADE
 REFERENCE TIE DRAWING:



STATE PLANE COORDINATE DATA:
 INDIANA WEST ZONE, NAD 83 (1997)
 U.S. SURVEY FEET

X ----

Y ----

COORDINATES ESTABLISHED BY:

APPROVED BY:

DATE:

REFERENCED BY: R.HAHN/K.KLEIN

DATE: 9/5/02

APPROVED BY: P.JONES, RLS#9600016

DATE: 9/10/02

CORNER FILE CODE:
 T6S-R9W-L-15

CORNER HISTORY:

CORNER FILE CODE:
T6S-R9W-L-15

ORIGINAL USPLS SURVEY: (Center of Section not monumented by USPLS Survey)

COUNTY SURVEYOR'S BOOKS: Book 1 P. 96: John C. Frary WCS Mar. 30, 1858 "Sassafrass post marked in road North from State Street in Newburgh"

Book 1 P. 167: O.B.Pasco WCS March 1, 1874 "SandStone Marked S 15"

Book 3 P. 264 B.C.Samples Surveyor Aug. 9, 1929 "Corner Stone found in place"

OTHER SURVEYS AND PLATS: "Corner Record" cards show 1973 ref. to I.P., undated ref. to iron pin.

5/8" I.P. shown on plat of High Ridge Part 3 Section C, 1" iron pin on High Ridge Part III Section "B", iron pin on High Ridge Part III Section A, iron pin on Green Meadows #2.

A barn nail was found and tied in to the Telephone Road Route Survey (Bernardin-Lochmueller & Assoc.) 2002.

VERIFICATION OF CORNER POSITION: September, 2002: The barn nail shown was found in place, reasonably consistent with the two previous Corner Record card references.

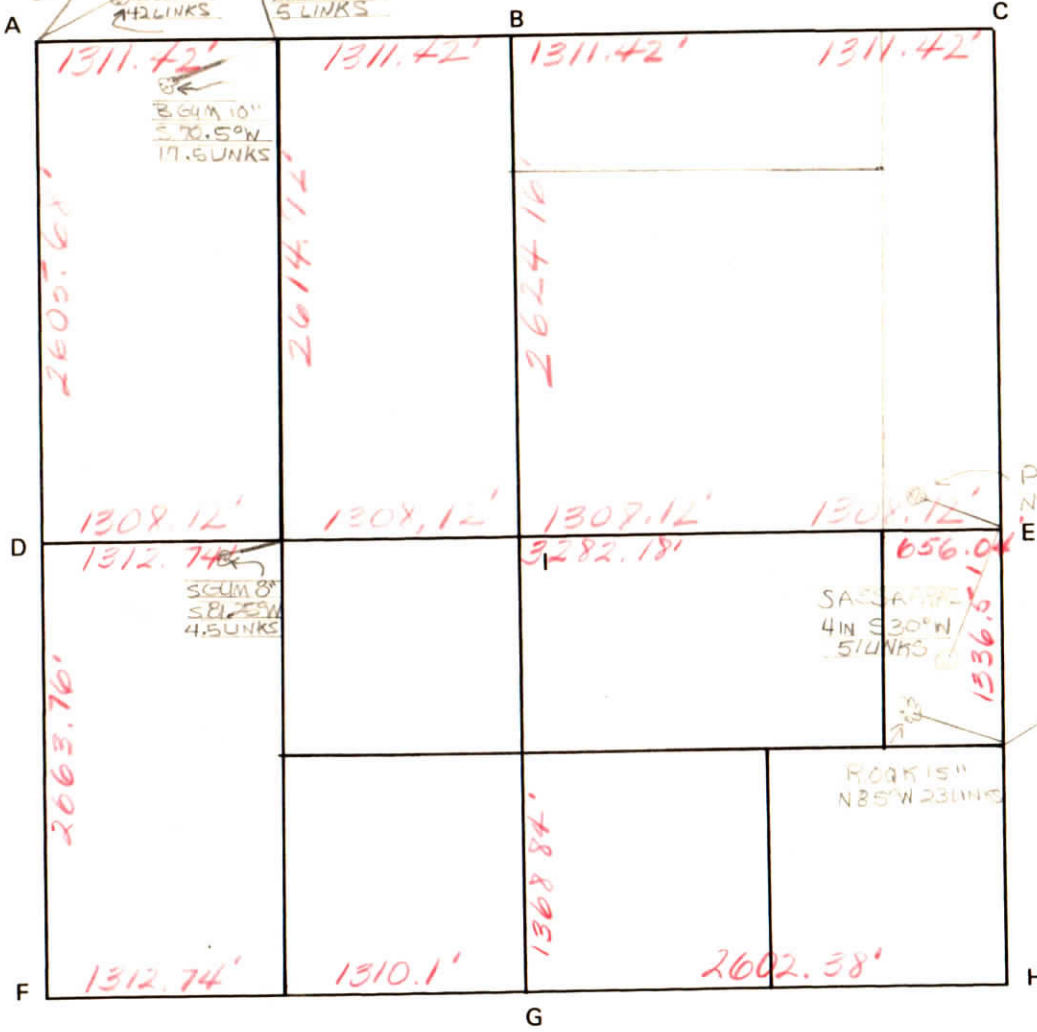
Perry E. Jones 9/10/02

CORNER CODE SYSTEM
Warrick County

B HICKORY 12"
N 24.6° E
39 LINKS

B GUM 16"
N 16.5° E
42 LINKS

W OAK 36"
N 60° W
5 LINKS



NOTES

BOOK 1, PG. 96, March 30, 1858

BOOK 1, PG. 256, Jan. 4, 1867

BOOK 3 PG 264 AUG 7, 1729

POPULAR 5 IN
N 72° W 12 LINKS

SASSAPARILLA
4 IN S 30° W
5 LINKS

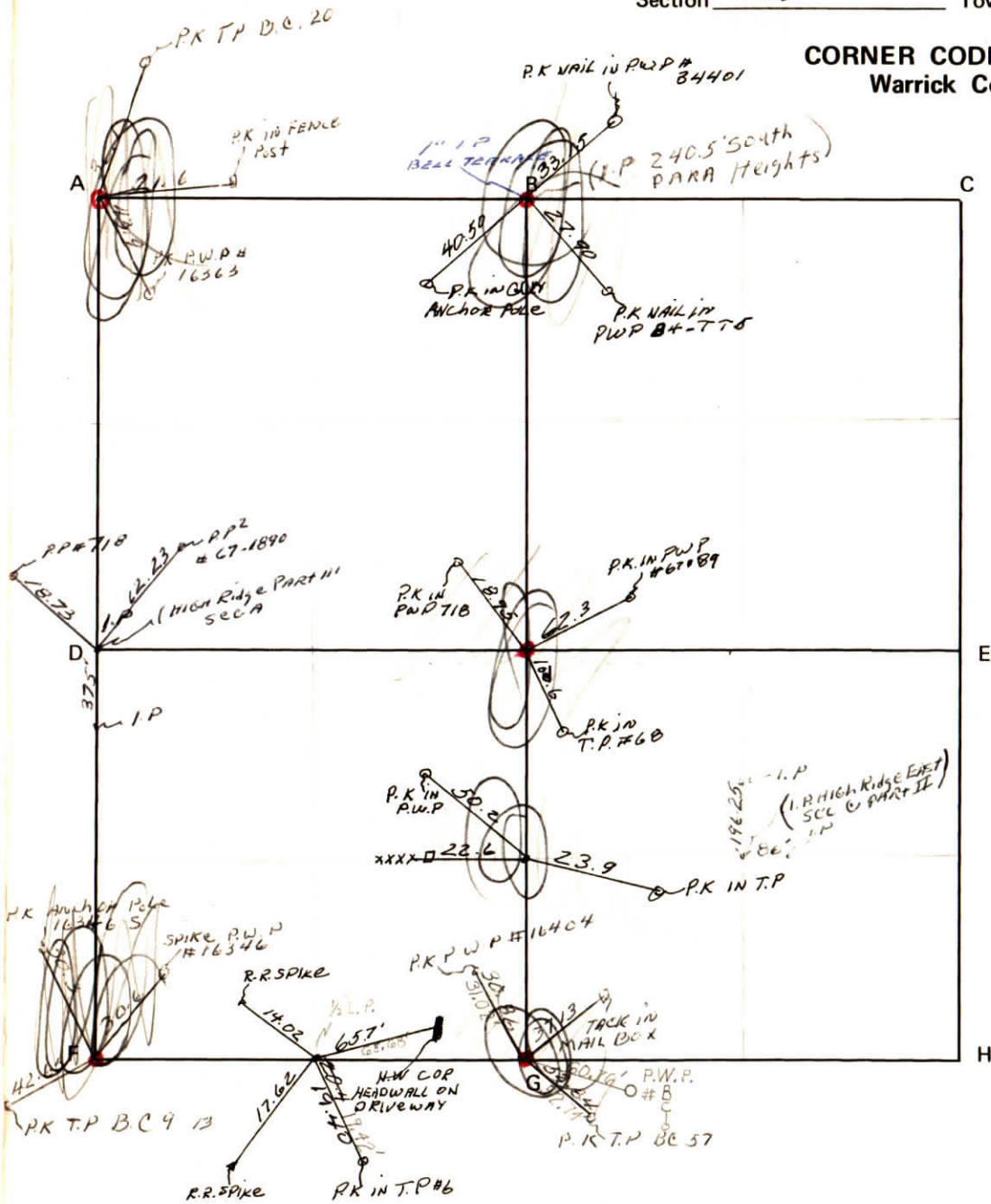
1336.51'

ROCK 15"
N 85° W 23 LINKS

ROCK
S 53° 30' W
22 LINKS

CORNER CODE SYSTEM Warrick County

NOTES



BELL RD.

RECORD OF SECTION CORNERS

Warrick County

Section 15 Township 6 South Range 9 West 2nd Principle Meridian

Date	Cor	Location	Description of		Distance from Corner	Bearing from Corner (North Assumed)	Cond	Check By	Remarks
			Monument	Reference					
12-6-74	A	NW cor.	1" iron pipe	1) PK nail 2) PK nail 3) PK nail	21.6' 36.1' 43.9'	N 06° E N 60° E S 50° E	poor	GAT	Found in place In old fence post In tele pole BC 20 In PWP #16363
6-26-74	B	NE NW cor. NE 1/4	1" iron pipe	1) PK nail 2) PK nail 3) PK nail	33.45' 28.31' 41.34'	N 33° E S 39° E S 62° W	good	GAT	Found in place In PWP # 34401 79 In PWP # 34401 78 In anchor pole 34401S
	C								
	D		iron pin	1. R.R. spike 2. R.R. spike 3. PK in TP #6 4. nw cor.	14.02 17.62 20.4				swc in Oak Grove Road SE cor. SW1/4 sw1/4
	E			headwell on drive way	65.7				
6-7-74	F	SW cor SW 1/4	1" iron pin	1) PK nail 2) Spike 3) Post 4) PK nail	30.3' 30.6' 50.45' 42.65'	N 45° W N 47° E S 12° E S 75° W	good	GAT	Found in place In anchor pole 16346S In PWP# 16346 Post of STOP sign In pole BC 9 13
6-26-74	G	SW cor SE 1/4	5/8" rebar	1) Hubtack 2) PK nail 3) PK nail	37.13' 52.84' 30.86'	N 67° E S 23° E N 59° W	good	GAT	Found in place Base of mail box In tele. pole BC 57 In PWP # 16404
	H								
6-26-74	I	center of sec.	1" iron pipe	1) PK nail 2) PK nail 3) PK nail	62.46' 100.52' 18.53'	N 71° E S 79° E N 68° W	good	GAT	Found in place In PWP # 67-1890 In tele. pole # 68 In PWP # 71-8
6/18/73			iron pin	1) pk in pwp 2) post in fence 3) PK in TP	50.2 22.6 23.9				swc in interse of Bell Roads High Ridge Sub. se cor NE1/4 sw1/4

CORNER RECORD
WARRICK COUNTY



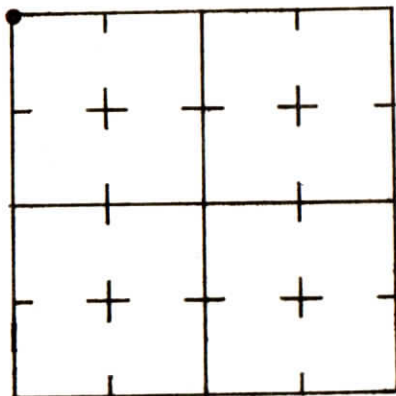
DESCRIPTION:

NW CORNER NW 1/4 NW 1/4
SECTION 15, T. 6 S. R. 9 W.
2nd PRINCIPAL MERIDIAN

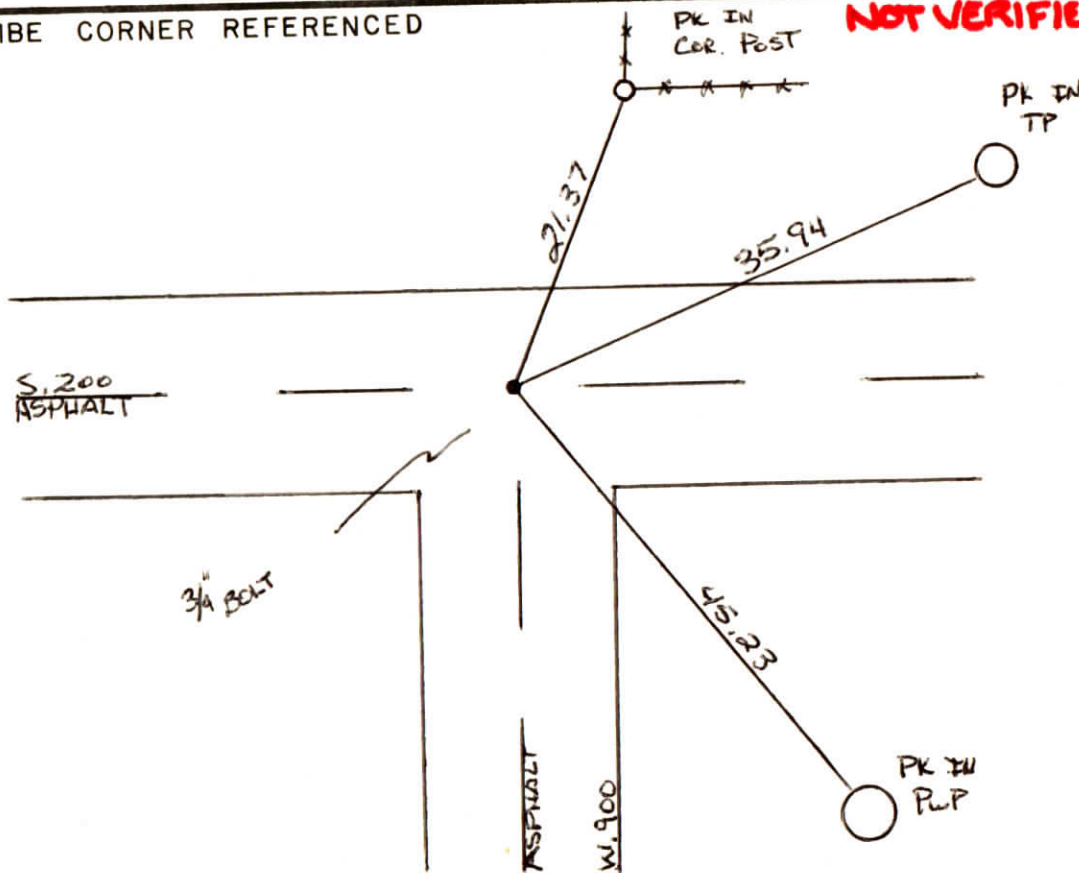
WARRICK COUNTY SURVEYOR
MICHAEL F. FELDBUSCH, L.S.

NOT VERIFIED

INDICATE CORNER REFERENCED



DESCRIBE CORNER REFERENCED



STATE PLANE COORDINATE DATA

INDIANA ZONE: WEST

X _____

Y _____

ESTABLISHED BY: _____

APPROVED BY

DATE

REFERENCED BY:

Hay Beck

DATE

5-30-84

**CORNER RECORD
WARRICK COUNTY**



DESCRIPTION:

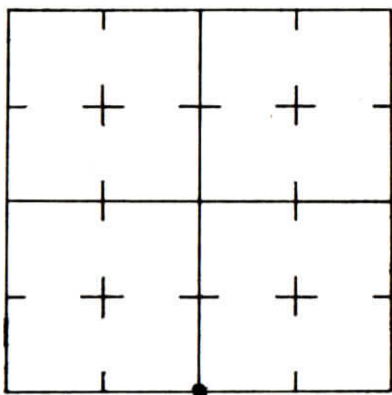
S.E. CORNER S.E. 1/4 N.W. 1/4

SECTION 15, T. 6 S. R. 9 W.

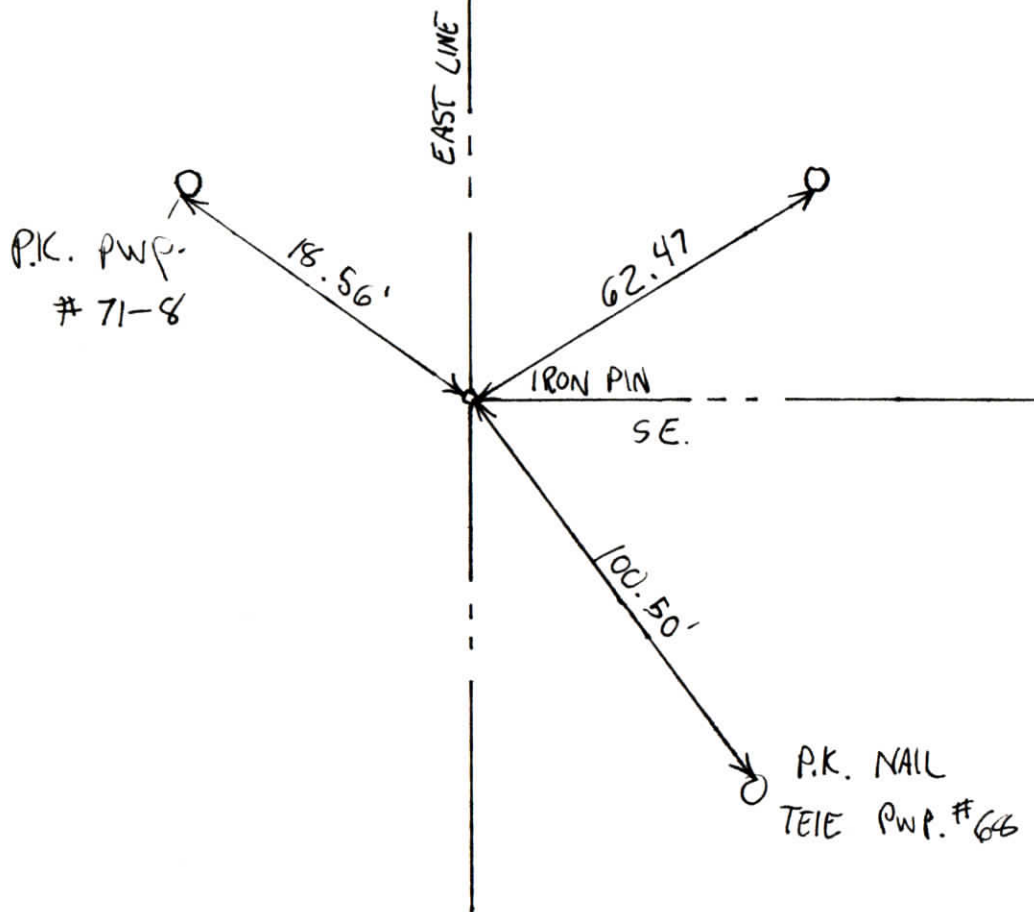
2nd PRINCIPLE MERIDIAN

**WARRICK COUNTY SURVEYOR
KARAN HARGRAVE-BARNHILL**

INDICATE CORNER REFERENCED



DESCRIBE CORNER REFERENCED



STATE PLANE COORDINATE DATA

INDIANA ZONE: WEST

X _____

Y _____

ESTABLISHED BY:

APPROVED BY

DATE

REFERENCED BY:

DATE

Section 15 Township 6 Range 9 2nd P.M.

CORNER CODE SYSTEM
Warrick County

NOTES



RECORD OF SECTION CORNERS

Warrick County

Section _____ Township _____ Range _____ 2nd Principle Meridian

Date	Cor	Description of		Distance from Corner	Azimuth from Corner (North Assumed)	Cond	Check By	Remarks
		Monument	Reference					
	A							
	B							
	C							
	D							
	E							
	F							
	G							
	H							
	I							

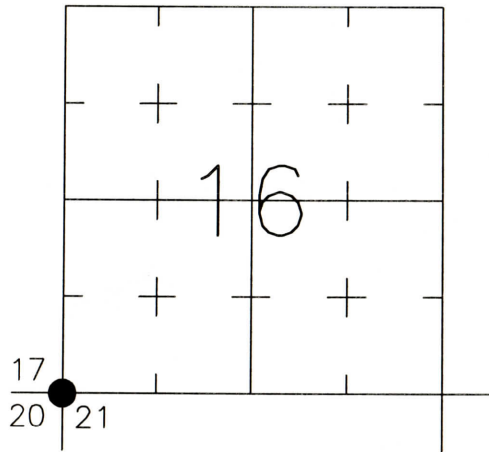
CORNER RECORD
WARRICK COUNTY



DESCRIPTION:
SOUTHWEST CORNER _____
SECTION 16, T. 6 S., R. 9 W.
2nd PRINCIPAL MERIDIAN

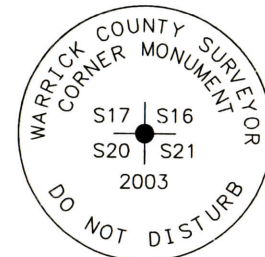
WARRICK COUNTY SURVEYOR
KARAN HARGRAVE-BARNHILL

INDICATE CORNER REFERENCED:

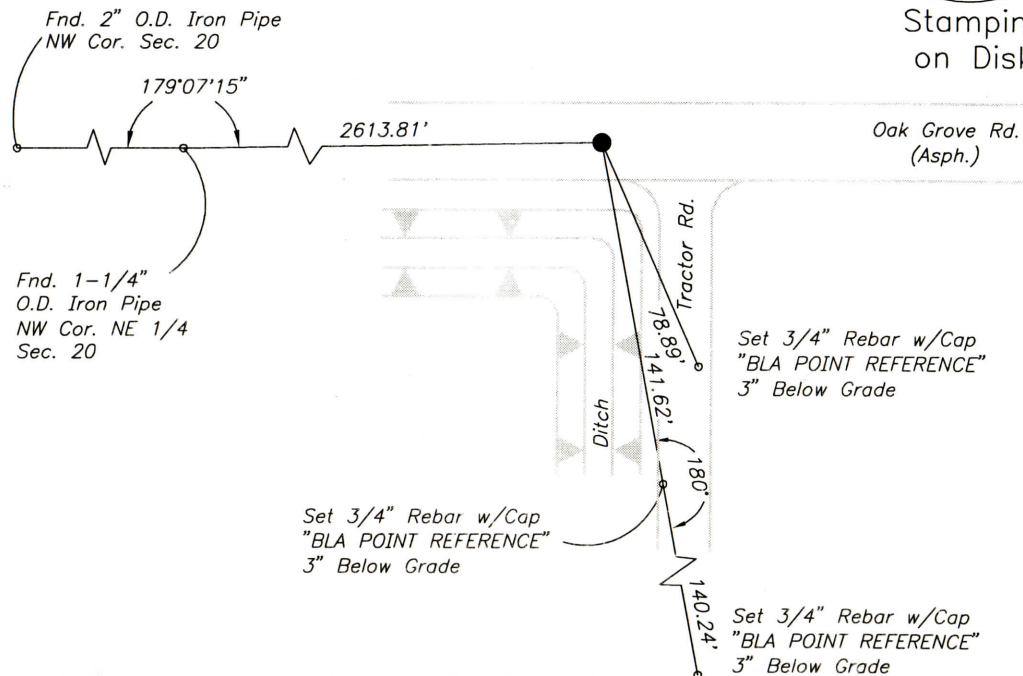


MONUMENT TYPE: ALUMINUM DISK
SIZE: 4" DIAM.
DEPTH/HEIGHT: 1" BELOW PVMT. GRADE
REFERENCE TIE DRAWING:

FOR NOTES ON CORNER HISTORY SEE REVERSE.



Stamping
on Disk



STATE PLANE COORDINATE DATA:
INDIANA WEST ZONE, NAD 83 (1997)
U.S. SURVEY FEET

X _____
Y _____

COORDINATES ESTABLISHED BY:

APPROVED BY:

DATE:

REFERENCED BY: R.HAHN/J.CRANE

DISK SET 10/27/03 D.DREES/G.M.BURRESS

APPROVED BY: P.JONES, RLS#9600016

DATE: 3/10/03

DATE: 10/28/03

CORNER FILE CODE:
T6S-R9W-N-09

CORNER HISTORY:

CORNER FILE CODE:
T6S-R9W-N-09

ORIGINAL USPLS SURVEY: Corner established by Jacob Fowler, Dec. 20, 1805 "Post".

COUNTY SURVEYOR'S BOOKS: Book 1 P. 30: Isaac Adams WCS Sept. 1, 1854 "Wood Post"

Book 2 P. 164: Louis Meyer WCS May 20, 1901 "SandStone Set"

Book 3 P. 161: Louis Meyer WCS March 21, 1911 "Old Corner"

Book 3 P. 237: Samuel Bohannon WCS April 24, 1919 "Old corner"

OTHER SURVEYS AND PLATS: A plat of survey by John W. Curry dated 12/30/87 shows a RR spike set at the corner (does not describe how the position was established).

A plat of survey by Donald Ray Adler (Doc. 1995R-211) showed no monument at the corner, with a calculated position based on ties to the 1987 Curry survey. Mr. Adler noted that the position did not match dimensions from the County Surveyor's corner records.

VERIFICATION OF CORNER POSITION: March, 2003; no monument was found; the 1987 Curry survey was used to re-establish the corner, using his angle and distance from the north quarter corner of section 20 as shown. The resulting position aligned well with the existing centerline of Oak Grove Road and with a dredged ditch running south from the corner (these physical features may in fact have been used by Mr. Curry to re-establish the corner). A railroad spike was set and referenced. October 27, 2003: the spike was replaced with the aluminum disk shown.

Perry E. Jones 10/28/03

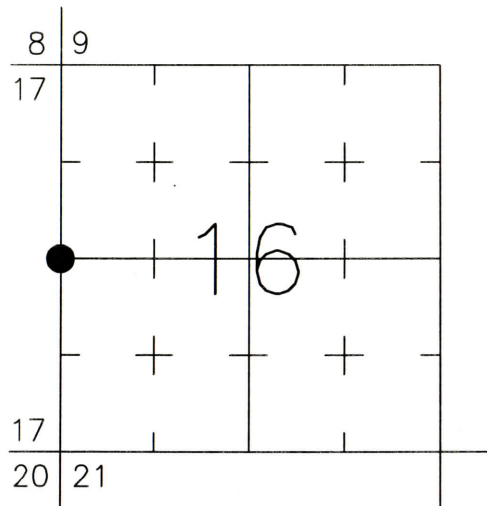
CORNER RECORD
WARRICK COUNTY



DESCRIPTION:
SOUTHWEST CORNER NORTHWEST QUARTER
SECTION 16, T. 6 S., R. 9 W.
2nd PRINCIPAL MERIDIAN

WARRICK COUNTY SURVEYOR
KARAN HARGRAVE-BARNHILL

INDICATE CORNER REFERENCED:



MONUMENT TYPE: STEEL PIPE
SIZE: 3-1/2" O.D.
DEPTH/HEIGHT: PROJECTING 9'
REFERENCE TIE DRAWING:

FOR NOTES ON CORNER HISTORY SEE REVERSE.

STATE PLANE COORDINATE DATA:
INDIANA WEST ZONE, NAD 83 (1997)
U.S. SURVEY FEET

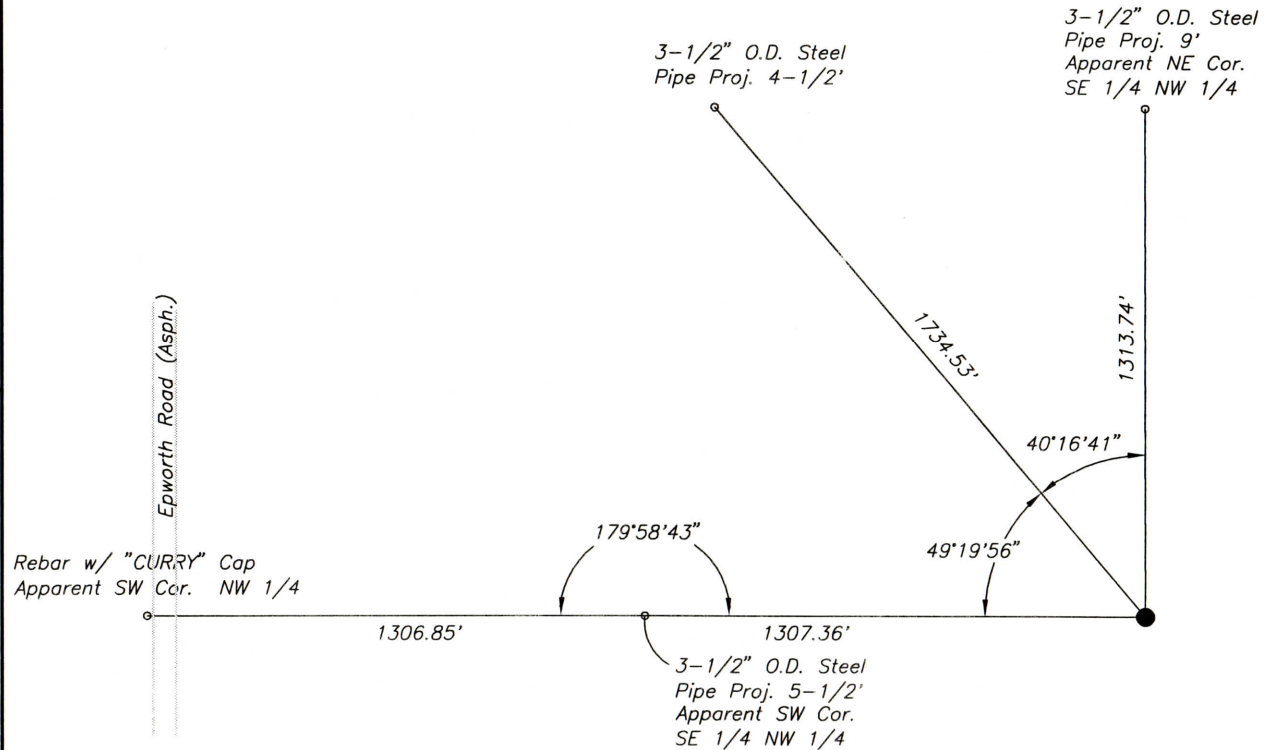
X _____

Y _____

COORDINATES ESTABLISHED BY:

APPROVED BY:

DATE:



REFERENCED BY: D.DREES/G.F.BERRY

DATE: 5/12/03

APPROVED BY: P.JONES, RLS#9600016

DATE: 5/14/03

CORNER FILE CODE:
T6S-R9W-L-09

CORNER HISTORY:

CORNER FILE CODE:
T6S-R9W-L-09

ORIGINAL USPLS SURVEY: Corner established by Jacob Fowler, Dec., 1805 (missing notes).

COUNTY SURVEYOR'S BOOKS: Book 1 P. 30: Isaac Adams WCS Sept. 1, 1854 "Wood Post"

Book 2 P. 164: Louis Meyer WCS May 20, 1901 "Sand Stone Set"

Book 3 P. 237: Samuel Bohannon WCS April 24, 1919 "Old corner"

OTHER SURVEYS AND PLATS: No Co. Surv. references, no recorded surveys/subdivisions found.

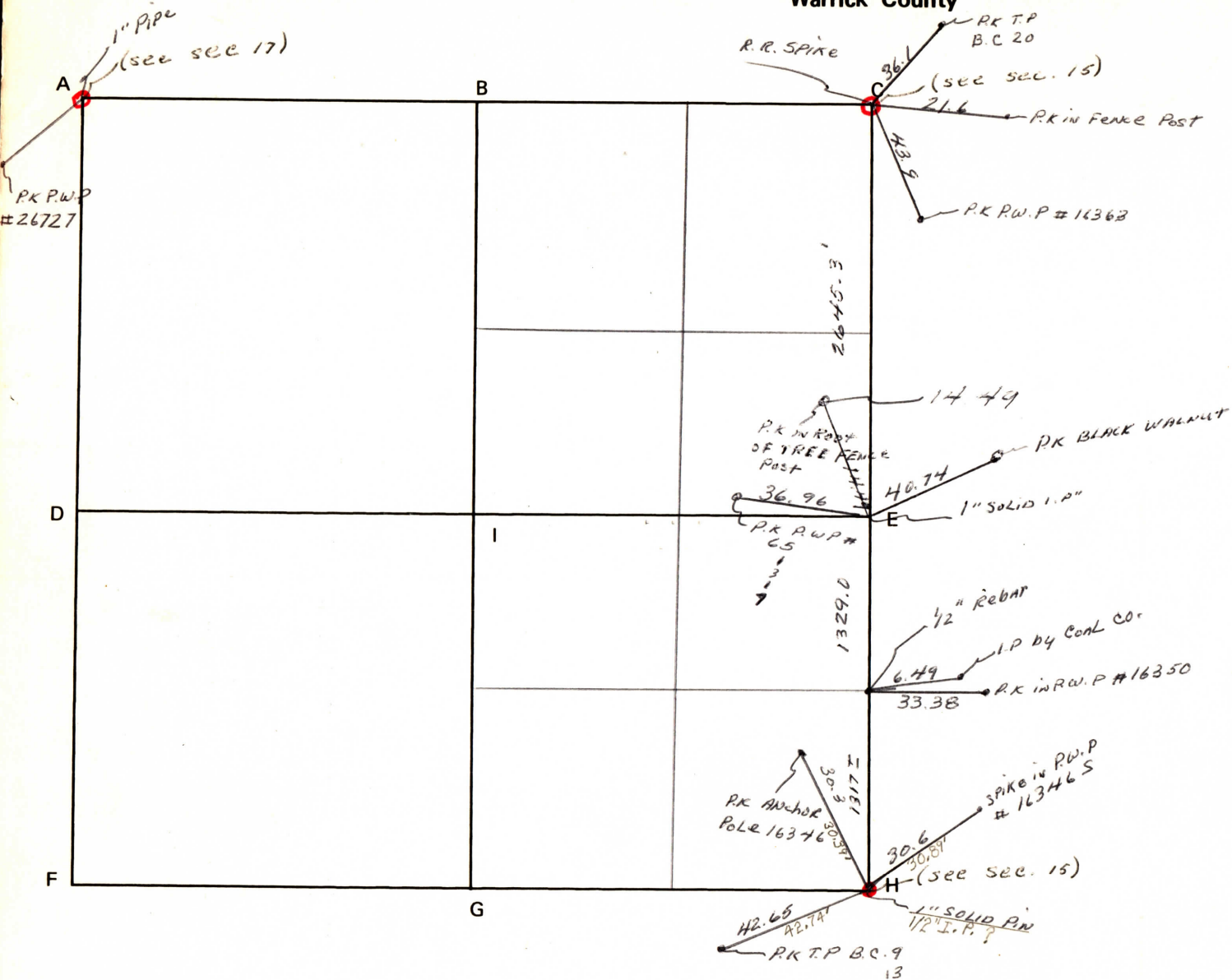
A 5" diam. steel post projecting 9' was found and tied in to the Telephone Road Route Survey (Bernardin-Lochmueller & Assoc.) 2002.

VERIFICATION OF CORNER POSITION: May, 2003; the steel pipe shown was found in place. Lloyd Stahl, adjoining property owner immediately northwest of this corner, reported that he had placed the pipe over an iron pin set by survey. He thought the survey was done in the late 1990's and that John Curry may have been the surveyor. (Doc. 1998R-001225 is a plat of a survey of another Lloyd Stahl tract, located in Section 17, done by John Curry.) The pipe shown was accepted as the apparent corner based on Mr. Stahl's testimony and the lack of evidence contradicting its position.

Perry E. Jones 5/14/03

CORNER CODE SYSTEM
Warrick County

NOTES



RECORD OF SECTION CORNERS
Warrick County

Section 16 Township 6 South Range 9 West 2nd Principle Meridian

Date	Cor	Location	Description of		Distance from Corner	Bearing from Corner (North Assumed)	Cond	Check By	Remarks
			Monument	Reference					
12-10-74	A	NW Cor.	1/2" iron pipe	1) PK nail	30.0'	S 53° W	poor	GAT	Found in place In FWP # 26727 In tele. pole.
	B			2) PK nail NORA	34.9'	N 39° W			
12-6-74	C	NE cor.	1" iron pipe	1) PK nail	21.6'	N 06° E	poor	GAT	Found in place In old fence post In tele. pole BC 20 In FWP # 16363
	D			2) PK nail	36.1'	N 60° E			
	E			3) PK nail	43.9'	S 50° E			
	F								
	G								
6-7-74	H	SE cor SE 1/4	1" iron pin	1) PK nail	30.3'	N 45° W	good	GAT	Found in place In anchor pole 16346S In FWP # 16346 Post of STOP sign In pole BC 9 13
				2) Spike	30.6'	N 47° E			
				3) Post	50.45'	S 12° E			
				4) PK nail	42.65'	S 75° W			

CORNER RECORD
WARRICK COUNTY



DESCRIPTION:

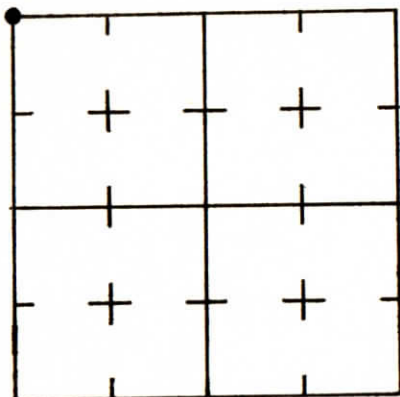
NW CORNER NW 1/4

SECTION 17, T. 6 S. R. 9 W.

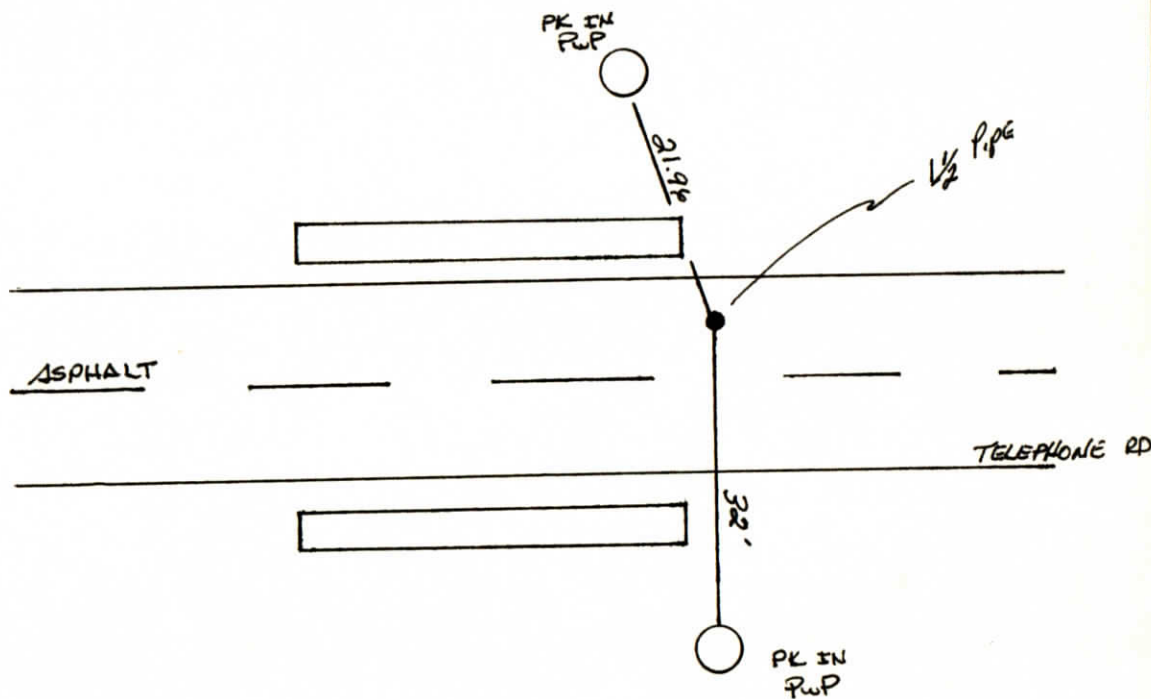
2nd PRINCIPAL MERIDIAN

WARRICK COUNTY SURVEYOR
MICHAEL F. FELDBUSCH, L.S.

INDICATE CORNER REFERENCED



DESCRIBE CORNER REFERENCED



STATE PLANE COORDINATE DATA

INDIANA ZONE: WEST

X _____

Y _____

ESTABLISHED BY:

APPROVED BY

M.F. L.S. 0459

DATE

REFERENCED BY:

Jay Beck

DATE

7-10-84

CORNER RECORD WARRICK COUNTY

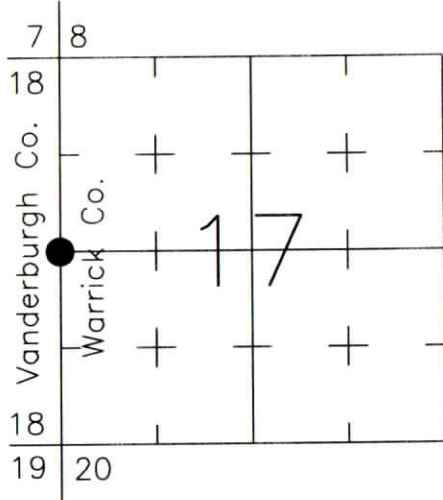


DESCRIPTION:
SOUTHWEST CORNER NORTHWEST QUARTER
 SECTION 17, T. 6 S., R. 9 W.
 2nd PRINCIPAL MERIDIAN

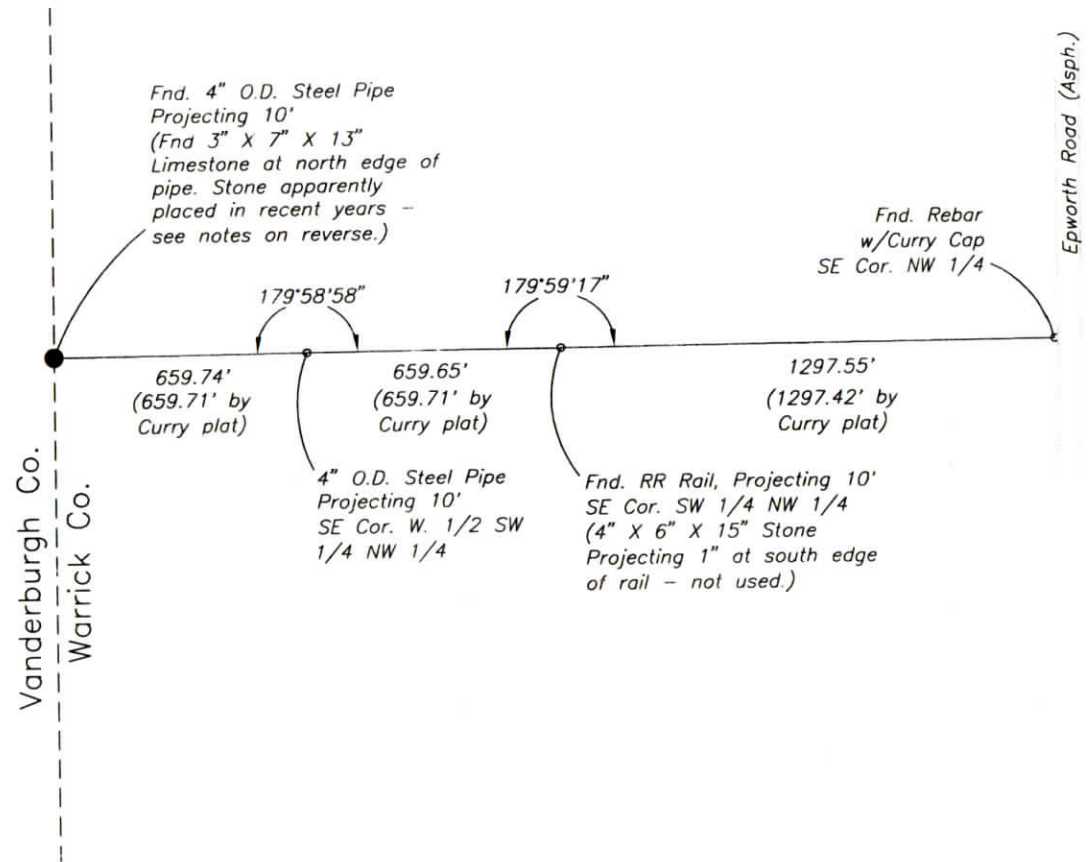
WARRICK COUNTY SURVEYOR
 KARAN HARGRAVE-BARNHILL

FOR NOTES ON CORNER HISTORY SEE REVERSE.

INDICATE CORNER REFERENCED:



MONUMENT TYPE: IRON PIPE
 SIZE: 4" Outside Diam.
 DEPTH/HEIGHT: PROJECTING 10'
 REFERENCE TIE DRAWING:



STATE PLANE COORDINATE DATA:
 INDIANA WEST ZONE, NAD 83 (1997)
 U.S. SURVEY FEET

X _____
 Y _____

COORDINATES ESTABLISHED BY:

APPROVED BY:

DATE:

REFERENCED BY: D.DREES/G.F.BERRY

DATE: 5/12/03

APPROVED BY: P.JONES, RLS#9600016

DATE: 5/29/03

CORNER FILE CODE:
 T6S-R9W-L-05

CORNER HISTORY:

CORNER FILE CODE:
T6S-R9W-L-05

ORIGINAL USPLS SURVEY: Corner established by Jacob Fowler, Dec., 1805 (missing notes).

COUNTY SURVEYOR'S BOOKS: (No entries found which include descriptions of a monument or bearing trees).

OTHER SURVEYS AND PLATS: The Vanderburgh County Surveyor's Office provided coordinates (dated 2002) for this corner which were calculated at the midpoint of the section line.

"IP Set" is shown on plats of survey by John W. Curry dated 1997 (Doc's. 1998R-001225 & 6). It appears from the plats that the line from an IP at the center of Section 17 to a post at the SW corner SE 1/4 NW 1/4 was projected west to intersect the line between the NW and SW corners of the section. The point set, using dimensions shown on the plats, would be 15.85' north of the midpoint coordinates provided by Vand. Co.

VERIFICATION OF CORNER POSITION: May, 2003; the steel pipe shown was found in place. The pipe was apparently placed by Lloyd Stahl, adjoining property owner immediately northeast of this corner, over the iron set by the Curry survey. On the north edge of the pipe, a limestone was found; Doug McDonald of the Vanderburgh County Surveyor's office reports that this stone was not present when he was at the corner around 2000-2002. Apparently the stone has been recently placed next to the pipe and was therefore not used.

Measured dimensions along the south line of the NW 1/4 of Section 17 agreed well with the Curry plats. The steel pipe shown was accepted as the apparent corner, being an existent monument consistent with a recorded survey. However, the difference between the pipe's location and the Vanderburgh County coordinates (midpoint along the west line of Section 17) indicate the uncertainty of this corner, representing the difference in position which results from the two different methods, either of which might reasonably be used to re-establish the original corner position. It should be noted that the Curry survey included ties to the northwest and southwest corners of the section; Mr. Curry therefore chose to project the east-west quarter line with the information available to him to use either method.

Perry E. Jones 5/29/03

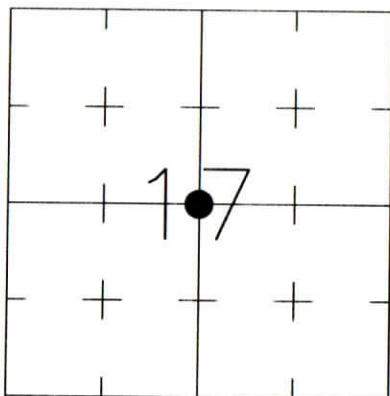
CORNER RECORD
WARRICK COUNTY



DESCRIPTION:
SOUTHWEST CORNER NORTHEAST QUARTER
SECTION 17, T. 6 S., R. 9 W.
2nd PRINCIPAL MERIDIAN

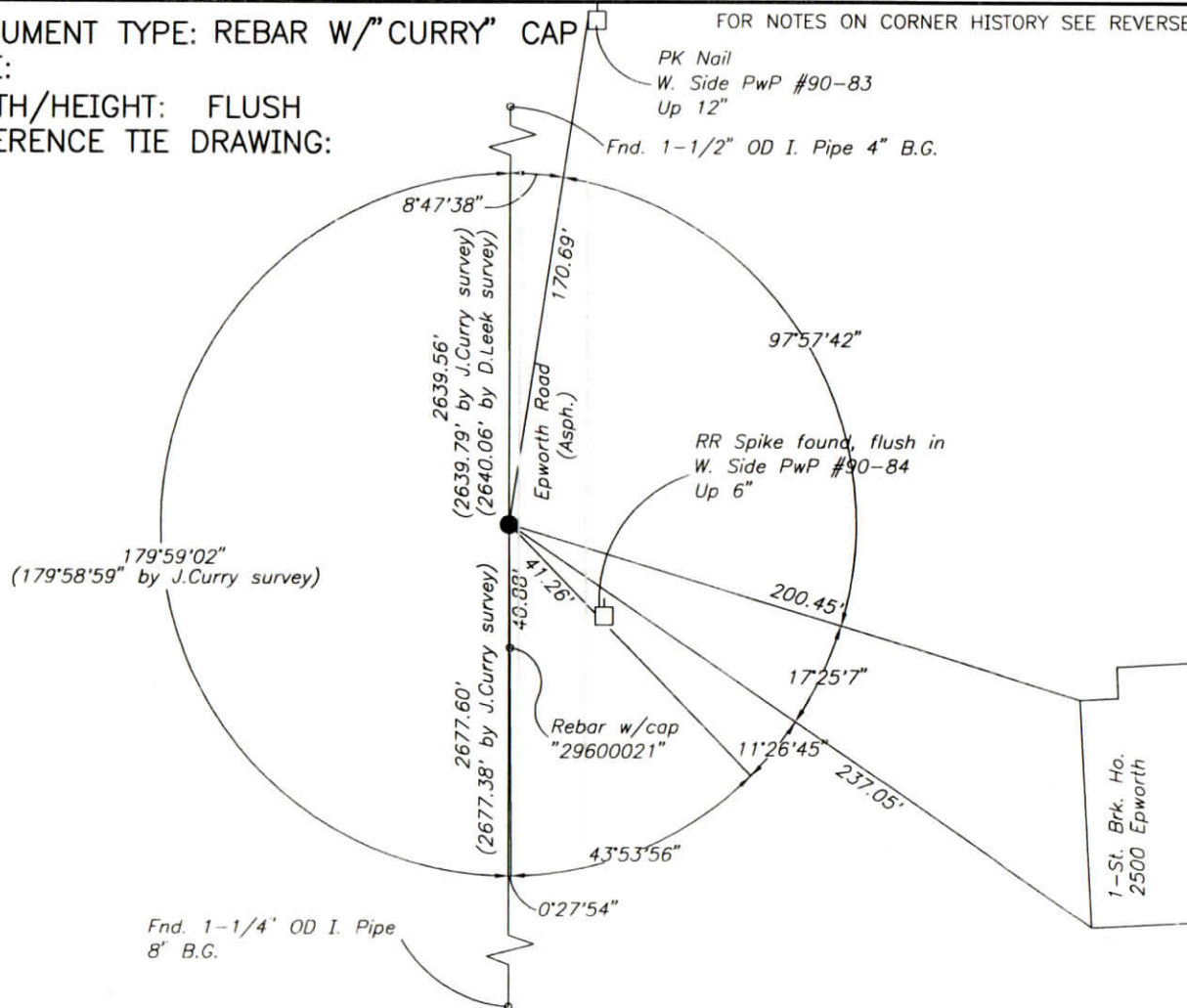
WARRICK COUNTY SURVEYOR
KARAN HARGRAVE-BARNHILL

INDICATE CORNER REFERENCED:



MONUMENT TYPE: REBAR W/"CURRY" CAP
SIZE:
DEPTH/HEIGHT: FLUSH
REFERENCE TIE DRAWING:

FOR NOTES ON CORNER HISTORY SEE REVERSE.



STATE PLANE COORDINATE DATA:
INDIANA WEST ZONE, NAD 83 (1997)
U.S. SURVEY FEET

X _____

Y _____

COORDINATES ESTABLISHED BY:

APPROVED BY:

DATE:

REFERENCED BY: R.HAHN/K.KLEIN

DATE: 9/5/02

APPROVED BY: P.JONES, RLS#9600016

DATE: 9/9/02

CORNER FILE CODE:
T6S-R9W-L-07

CORNER HISTORY:

CORNER FILE CODE:
T6S-R9W-L-07

ORIGINAL USPLS SURVEY: (Center of Section: not monumented by USPLS Survey)

COUNTY SURVEYOR'S BOOKS: (No entries found which include descriptions of a monument or bearing trees).

OTHER SURVEYS AND PLATS: "Corner Code System" card includes an undated corner reference (monument not identified).

Plats of survey by John W. Curry show IP found (Doc. 1998R-001225 and 1998R-001226).

A plat of survey by Danny K. Leek shows a 3/4" square rod found (Doc. 1998R-001641).

VERIFICATION OF CORNER POSITION: September, 2002: The rebar with "CURRY" cap shown was found in place. A piece of broken concrete with a 3/4" square bolt was also found, disturbed, nearby, the bolt apparently having been replaced by the rebar/cap. Note that the dimensions from the John Curry survey and the Danny Leek survey indicate that the current position of the rebar/cap may be 0.2' to 0.5' north of the monument location tied in on the 1998 surveys. References shown, however, are to the existing rebar/cap as found.

Perry E. Jones 9/9/02

CORNER RECORD
WARRICK COUNTY

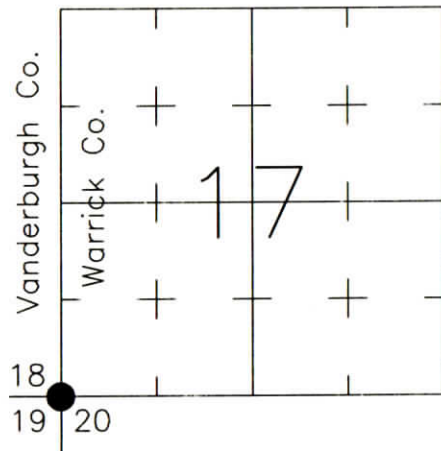


DESCRIPTION:
SOUTHWEST CORNER _____
SECTION 17, T. 6 S., R. 9 W.
2nd PRINCIPAL MERIDIAN

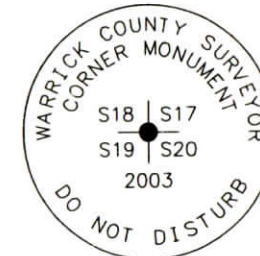
WARRICK COUNTY SURVEYOR
KARAN HARGRAVE-BARNHILL

FOR NOTES ON CORNER HISTORY SEE REVERSE.

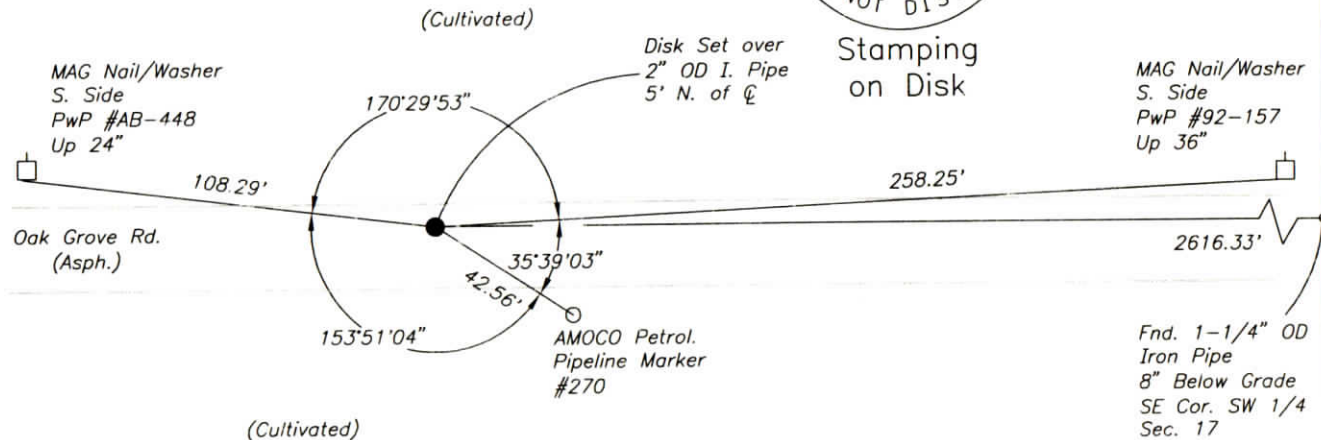
INDICATE CORNER REFERENCED:



MONUMENT TYPE: ALUMINUM DISK
SIZE: 4" DIAM.
DEPTH/HEIGHT: 1" BELOW GRADE (OVER 2" O.D. IRON PIPE 18" BG)
REFERENCE TIE DRAWING:



Stamping
on Disk



STATE PLANE COORDINATE DATA:
INDIANA WEST ZONE, NAD 83 (1997)
U.S. SURVEY FEET

X 2847012.767

Y 999286.463

COORDINATES ESTABLISHED BY:
Douglas G. McDonald, PE LS, Vand. Co.
Surveyor's Office
APPROVED BY:

DATE:

REFERENCED BY: D.DREES/C.BINKLEY

DATE: 9/5/02

DISK SET 10/28/03 D.DREES/G.M.BURRESS

APPROVED BY: P.JONES, RLS#9600016

DATE: 10/29/03

CORNER FILE CODE:
T6S-R9W-N-05

CORNER HISTORY:

CORNER FILE CODE:
T6S-R9W-N-05

ORIGINAL USPLS SURVEY: Corner established by Jacob Fowler, Dec. 21(?), 1805 "Post".

COUNTY SURVEYOR'S BOOKS: (No entries found which include descriptions of a monument or bearing trees).

OTHER SURVEYS AND PLATS: Vanderburgh County Surveyor's office provided coordinates (dated 2002) for a 1-1/2" pipe.

Vanderburgh and Warrick County "Corner Record" cards show 1988 reference to a 2-1/2" iron pipe 3" below grade (by INDOT survey party).

A 1-1/2" iron pipe found is shown on plats of survey by John W. Curry dated 1997 (Doc's. 1998R-001225 & 6).

A 1-1/2" iron pipe 10" below grade is shown on the plat of Charlestown Square Section 1 (Doc. 2000R010714).

VERIFICATION OF CORNER POSITION: September, 2002: A 2" OD Iron Pipe was found in place, 18" below asphalt grade. The size and depth of the pipe was reasonably consistent with previous Corner Record cards and recent surveys. The distance measured easterly to the South 1/4 Corner of Section 17 agreed within 0.02' with dimensions shown on the 1997 Curry survey. No attempt was made to verify the state plane coordinates provided by Vanderburgh County. A railroad spike was set over the pipe, 2" below existing asphalt grade. October 28, 2003: The railroad spike was replaced with the aluminum disk shown.

Perry E. Jones 10/29/03

CORNER RECORD WARRICK COUNTY

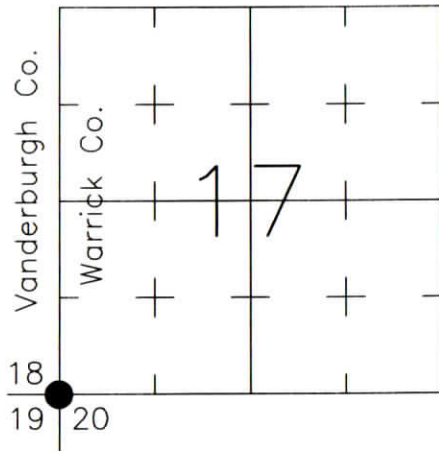


DESCRIPTION:
SOUTHWEST CORNER _____
SECTION 17, T. 6 S., R. 9 W.
2nd PRINCIPLE MERIDIAN

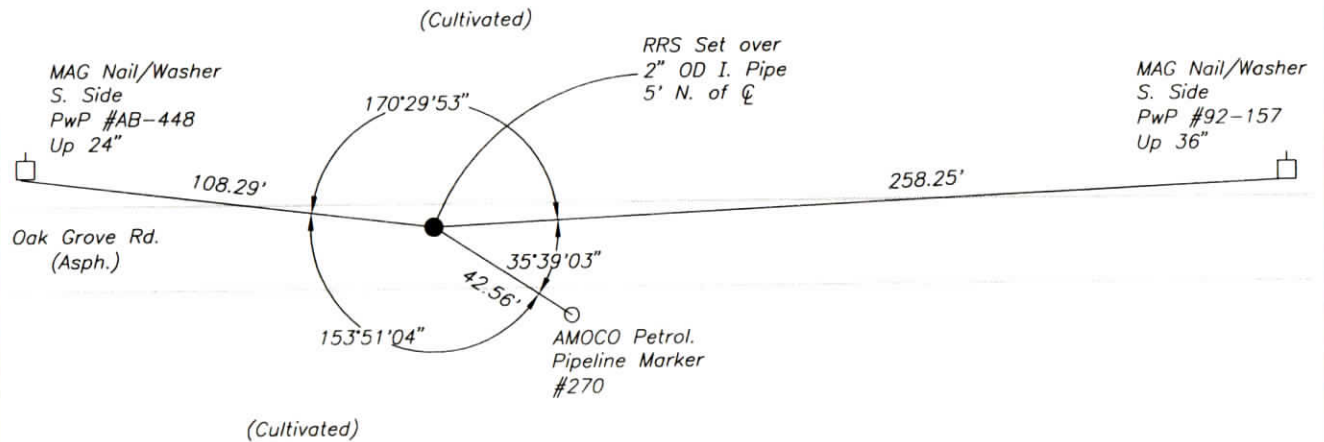
WARRICK COUNTY SURVEYOR
KARAN HARGRAVE-BARNHILL

FOR NOTES ON CORNER HISTORY SEE REVERSE.

INDICATE CORNER REFERENCED:



MONUMENT TYPE: PUNCHED RR SPIKE SET
~~SIZE:~~ OVER 2" O.D. IRON PIPE (18" BG)
DEPTH/HEIGHT: (SPIKE SET) 2" BELOW ASPH. GRADE
REFERENCE TIE DRAWING:



STATE PLANE COORDINATE DATA:
INDIANA WEST ZONE, NAD 83 (1997)
U.S. SURVEY FEET

X 2847079.51

Y 1009877.98

COORDINATES ESTABLISHED BY:
Douglas G. McDonald, PE LS, Vand. Co.
Surveyor's Office
APPROVED BY:

DATE:

REFERENCED BY: D.DREES/C.BINKLEY

DATE: 9/5/02

APPROVED BY: P.JONES, RLS#9600016

DATE: 9/10/02

CORNER FILE CODE:
T6S-R9W-N-05

CORNER HISTORY:

CORNER FILE CODE:
T6S-R9W-N-05

ORIGINAL USPLS SURVEY: Corner established by Jacob Fowler, Dec. 21(?), 1805 "Post".

COUNTY SURVEYOR'S BOOKS: (No entries found which include descriptions of a monument or bearing trees).

OTHER SURVEYS AND PLATS: Vanderburgh and Warrick County "Corner Record" cards show 1988 reference to a 2-1/2" iron pipe 3" below grade (by INDOT survey party).

A 1-1/2" iron pipe found is shown on plats of survey by John W. Curry dated 1997 (Doc's. 1998R-001225 & 6).

A 1-1/2" iron pipe 10" below grade is shown on the plat of Charlestown Square Section 1 (Doc. 2000R010714).

VERIFICATION OF CORNER POSITION: September, 2002: The 2" OD Iron Pipe shown was found in place, 18" below asphalt grade. The size and depth of the pipe was reasonably consistent with previous Corner Record cards and recent surveys. A railroad spike was set over the pipe, 2" below existing asphalt grade.

Perry E. Jones 9/10/02

CORNER RECORD
WARRICK COUNTY



DESCRIPTION :

SW CORNER SW^{1/4} SW^{1/4}

SECTION 17, T. 6 S. R. 9 W.

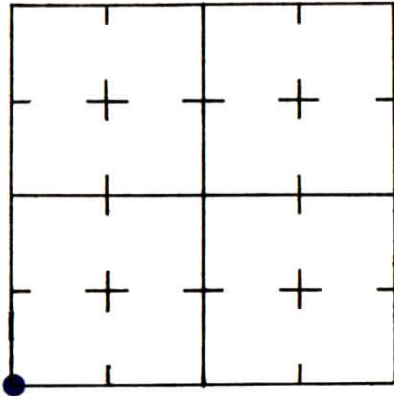
2nd PRINCIPLE MERIDIAN

OHIO TWP

WARRICK COUNTY SURVEYOR

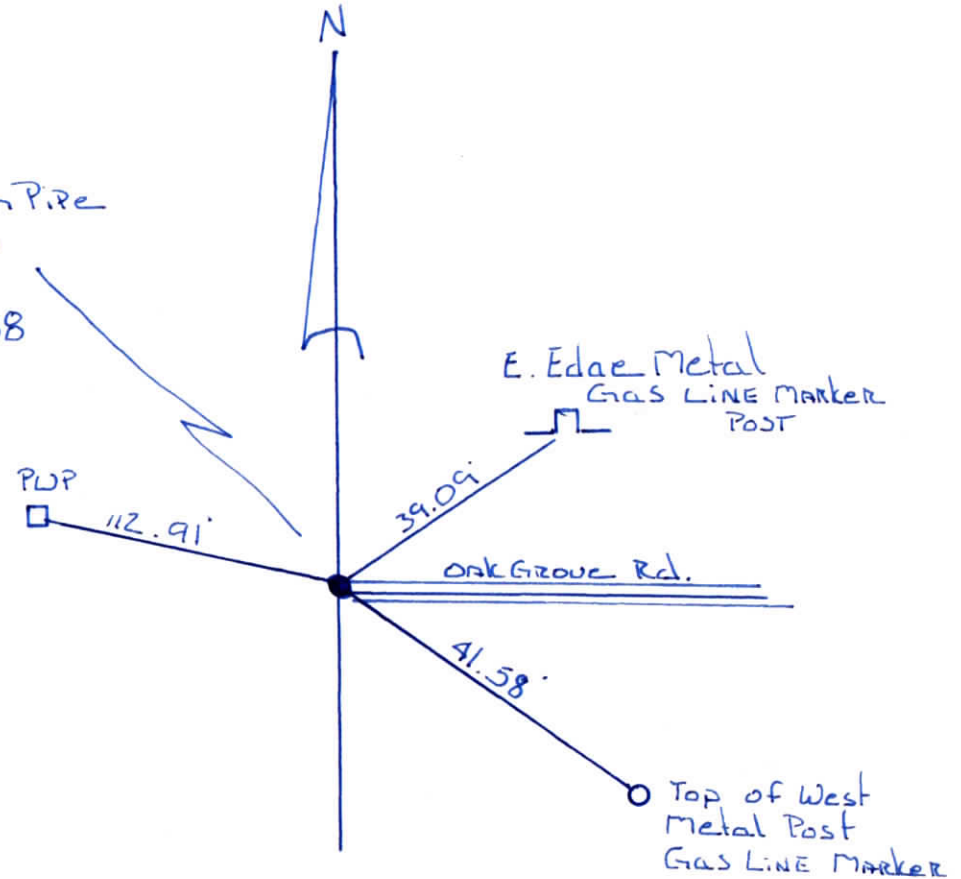
MICHAEL IRVIN

INDICATE CORNER REFERENCED



DESCRIBE CORNER REFERENCED

2 1/2" Iron Pipe
3" Deep
S.P. #4
11-22-88



STATE PLANE COORDINATE DATA

INDIANA ZONE: WEST

X _____

Y _____

ESTABLISHED BY:

APPROVED BY

DATE

REFERENCED BY:

DATE

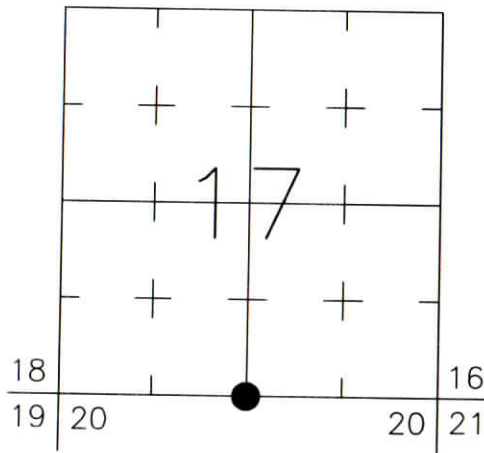
CORNER RECORD
WARRICK COUNTY



DESCRIPTION:
SOUTHWEST CORNER SOUTHEAST QUARTER
SECTION 17, T. 6 S., R. 9 W.
2nd PRINCIPLE MERIDIAN

WARRICK COUNTY SURVEYOR
KARAN HARGRAVE-BARNHILL

INDICATE CORNER REFERENCED:



MONUMENT TYPE: IRON PIPE
SIZE: 1-1/4" O.D.
DEPTH/HEIGHT: 8" BELOW ASPH. GRADE
REFERENCE TIE DRAWING:

FOR NOTES ON CORNER HISTORY SEE REVERSE.

STATE PLANE COORDINATE DATA:
INDIANA WEST ZONE, NAD 83 (1997)
U.S. SURVEY FEET

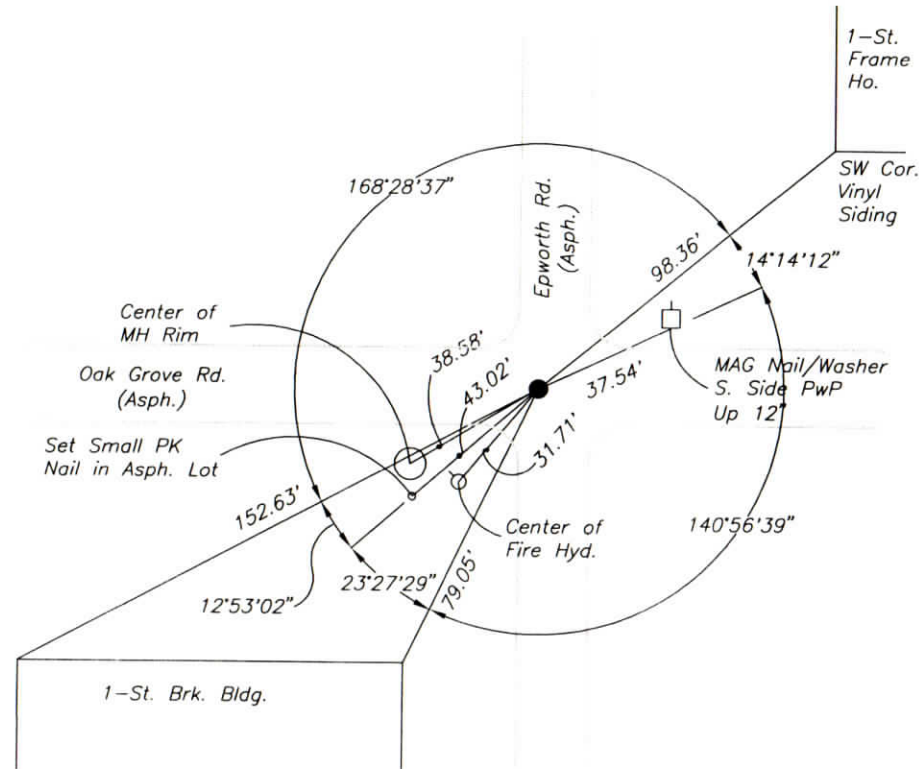
X _____

Y _____

COORDINATES ESTABLISHED BY:

APPROVED BY:

DATE:



REFERENCED BY: D.DREES/C.BINKLEY

DATE: 9/5/02

APPROVED BY: P.JONES, RLS#9600016

DATE: 9/10/02

CORNER FILE CODE:
T6S-R9W-N-07

CORNER HISTORY:

CORNER FILE CODE:
T6S-R9W-N-07

ORIGINAL USPLS SURVEY: Corner established by Jacob Fowler, Dec. 21(?), 1805 "Post" (@39.90ch/79.80ch).

COUNTY SURVEYOR'S BOOKS: Book 3 P. 237: Samuel Bohannon WCS April 24, 1919 "Old corner"

OTHER SURVEYS AND PLATS: "Corner Code System" card shows undated reference to 1" IP.

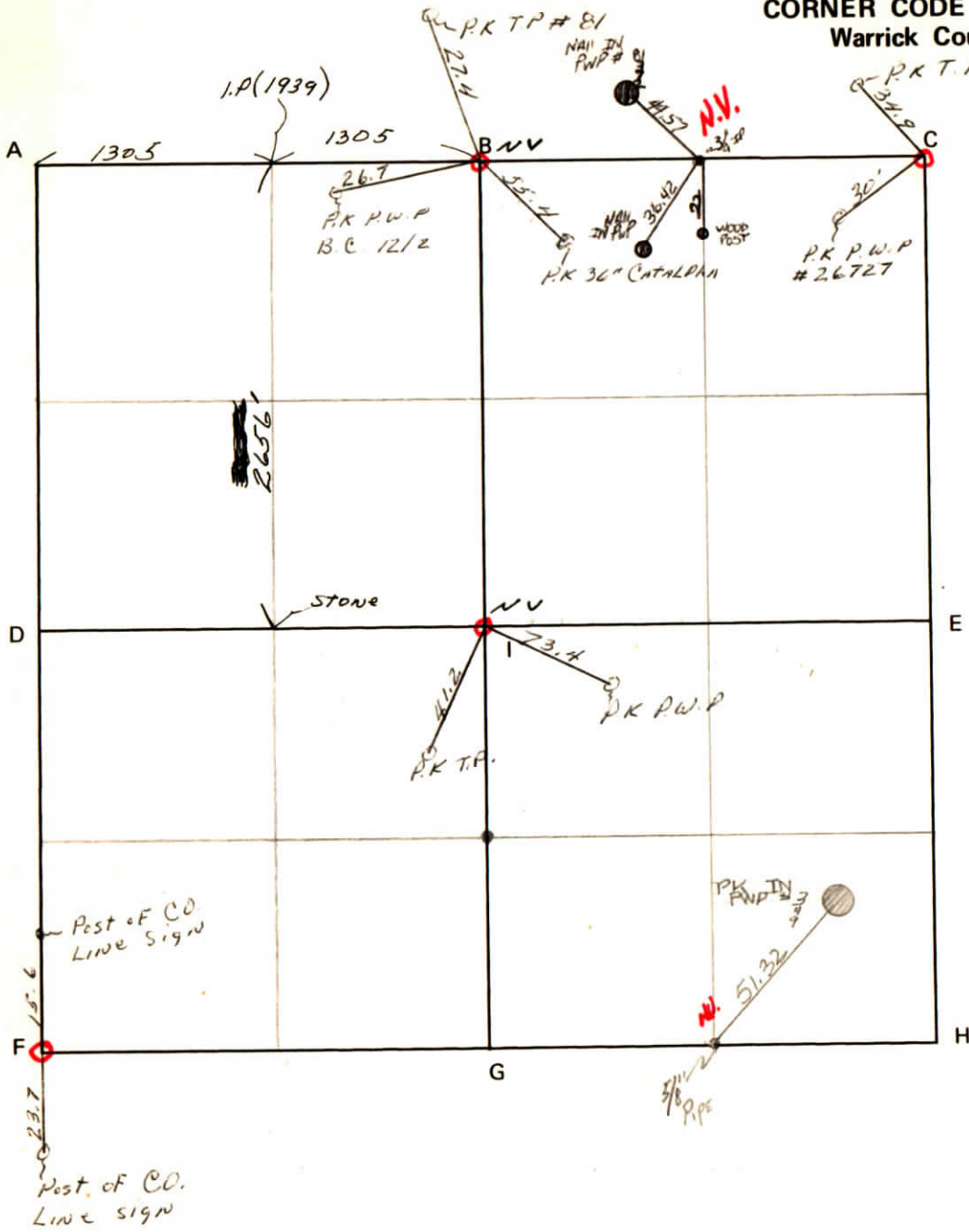
IP found is shown on plats of survey by John W. Curry dated 1997 (Doc's. 1998R-001225 & 6).

A 1-1/2" IP is shown on a plat of survey by Michael F. Feldbusch (Doc. 2001R-000889).

VERIFICATION OF CORNER POSITION: September, 2002: The 1-1/4" OD Iron Pipe was found in place; the measured dimension (2677.60') from this pipe to a rebar w/cap at the center of Section 17 agreed within 0.01' of the 2001 Feldbusch survey (2677.59'). (See also Corner L-07, Center of Section 17, for angular comparisons with 1988 John Curry Survey).

Perry E. Jones 9/10/02

CORNER CODE SYSTEM
Warrick County



NOTES

RECORD OF SECTION CORNERS

Warrick County

Section 17 Township 6 South Range 9 West 2nd Principle Meridian

Date	Cor	Location	Description of		Distance from Corner	Bearing from Corner (North Assumed)	Cond	Check By	Remarks
			Monument	Reference					
	A								
12-10-74	B	NE cor. NW $\frac{1}{4}$	$\frac{1}{2}$ " re-bar 3' below road surface	1) PK nail 2) PK nail 3) PK nail	55.4' 26.7' 27.4'	S 19° E S 28° W N 30° W	fair	GAT	Found in place In 36" catalpha tree In PWP BC 12/2 In tele. pole # 81
12-10-74	C	NE cor.	$\frac{1}{2}$ " iron pipe	1) PK nail 2) PK nail NORA	30.0' 34.9'	S 53° W N 39° W	poor	GAT	Found in place In PWP # 26727 In tele. pole
	D								
	E								
12-23-74	F	SW cor.	1 3/4" iron pipe	1) Post 2) Post NORA	15.6' 23.7'	N 00° S 00°	poor	GAT	Found in place Post of Co. line sign Post of Co. line sign
	G								
	H								
12-10-74	I	Center	3/4" bolt on end	1) PK nail 2) PK nail 3) iron pipe	73.4' 41.2' 17.6'	S 11° E S 19° W S 81° W	fair	GAT	Found in place In PWP no number In tele. pole In NE cor. wing wall

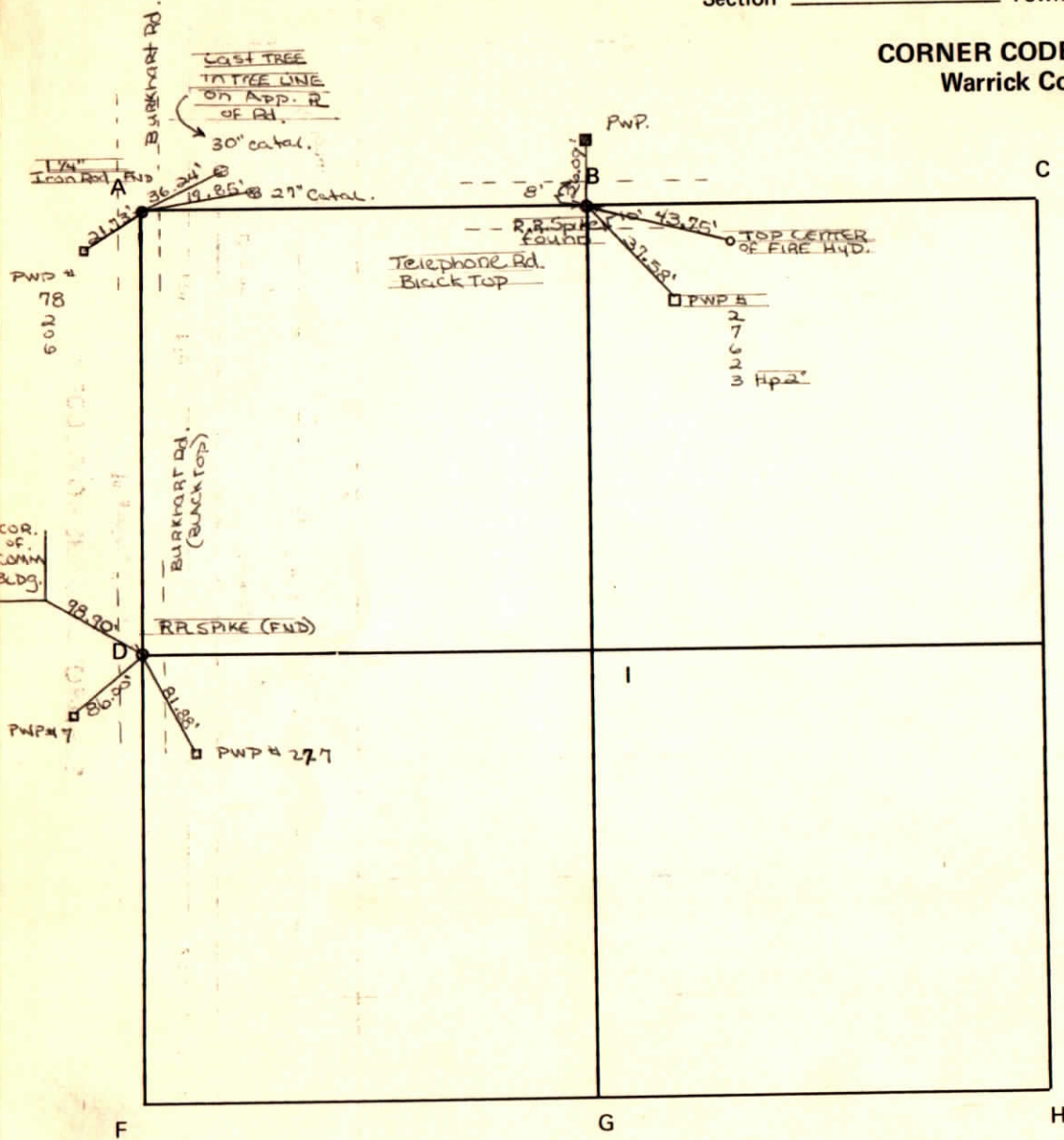
*wing wall destroyed
Aug. 1975 B.A.T.*

Vand. Co.

Section 18 Township 6 South Range 9 West 2nd P.M.

CORNER CODE SYSTEM
Warrick County

NOTES



RECORD OF SECTION CORNERS

Warrick County

Section 18 Township 6s outh Range 9west 2nd Principle Meridian

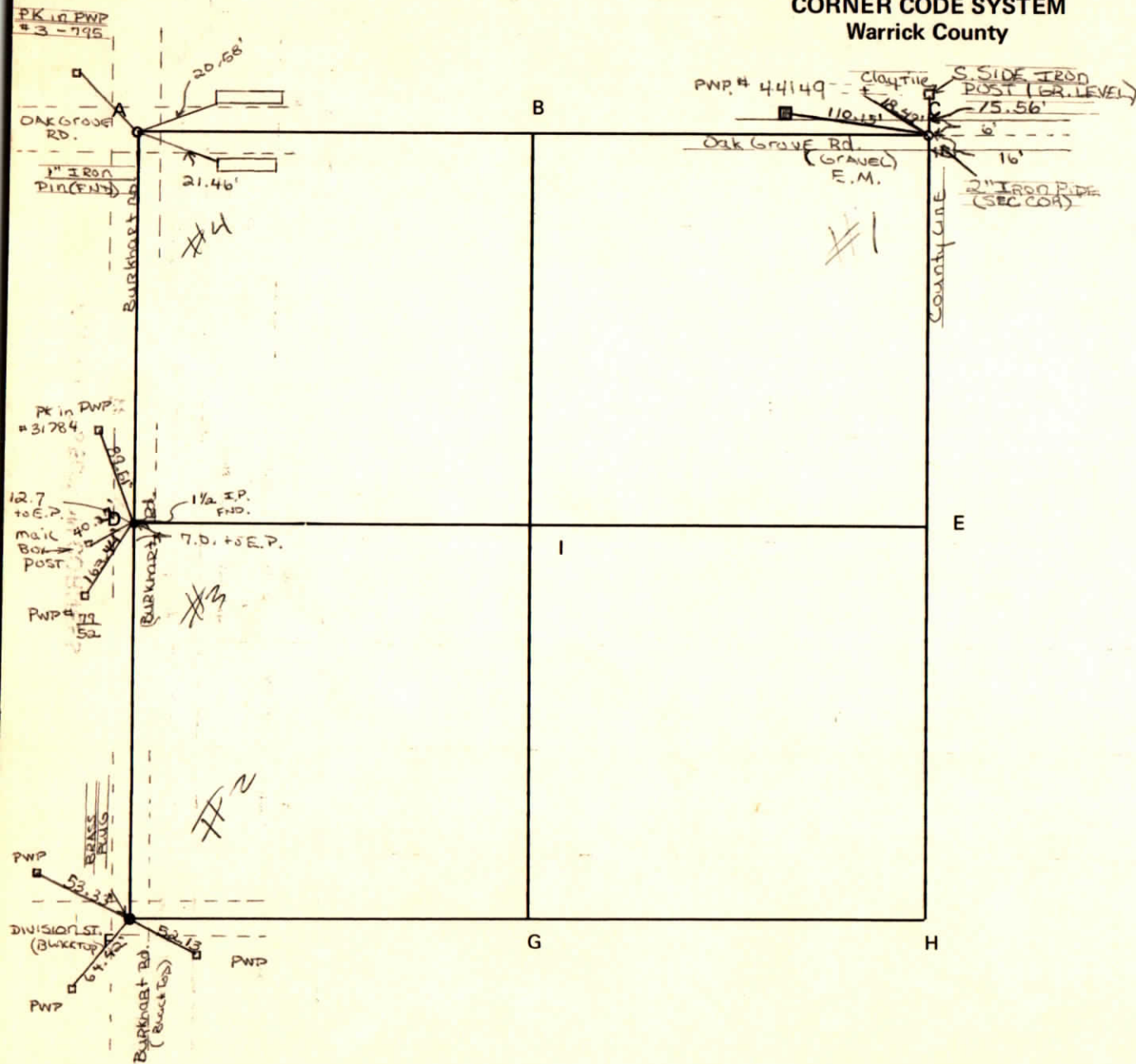
Date	Cor	Description of		Distance from Corner	Azimuth from Corner (North Assumed)	Cond	Check By	Remarks
		Monument	Reference					
	A							
	B							
	C							
	D							
	E							
	F							
	G							
	H							
	I							

VAND.CO.

Section 19 Township 6south Range 9west 2nd P.M.

CORNER CODE SYSTEM
Warrick County

NOTES



RECORD OF SECTION CORNERS

Warrick County

Section 19 Township 6s south Range 9west 2nd Principle Meridian

Date	Cor	Description of		Distance from Corner	Azimuth from Corner (North Assumed)	Cond	Check By	Remarks
		Monument	Reference *					
	A							
	B							
	C							
	D							
	E							
	F							
	G							
	H							
	I							

CORNER RECORD
WARRICK COUNTY



DESCRIPTION:

SOUTHWEST CORNER

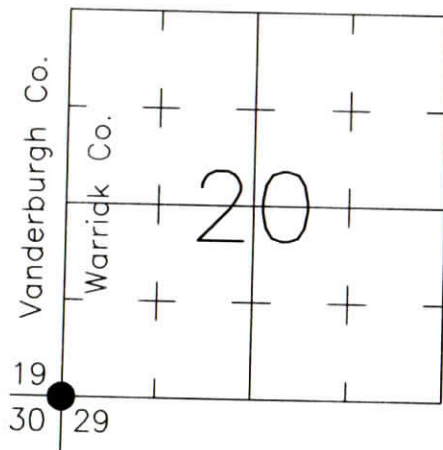
SECTION 20, T. 6 S., R. 9 W.

2nd PRINCIPLE MERIDIAN

WARRICK COUNTY SURVEYOR

KARAN HARGRAVE-BARNHILL

INDICATE CORNER REFERENCED:



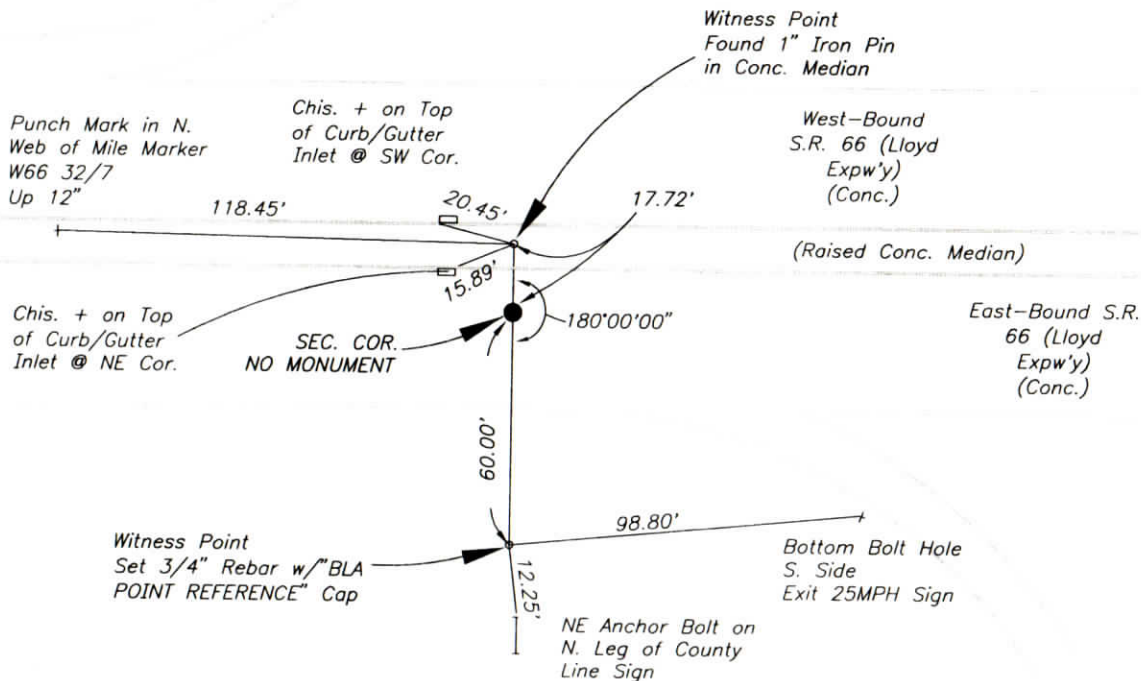
MONUMENT TYPE: NO MON. (WITNESS POINTS)

FOR NOTES ON CORNER HISTORY SEE REVERSE.

SIZE:

DEPTH/HEIGHT:

REFERENCE TIE DRAWING:



STATE PLANE COORDINATE DATA:
INDIANA WEST ZONE, NAD 83 (1997)
U.S. SURVEY FEET

X 2847079.51

Y 1009877.98

COORDINATES ESTABLISHED BY:
Douglas G. McDonald, PE LS, Vand. Co.
Surveyor's Office

APPROVED BY:

DATE:

REFERENCED BY: R.HAHN/J.CRANE

DATE: 3/11/03

APPROVED BY: P.JONES, RLS#9600016

DATE: 3/13/03

CORNER FILE CODE:
T6S-R9W-R-05

CORNER HISTORY:

CORNER FILE CODE:
T6S-R9W-R-05

ORIGINAL USPLS SURVEY: Corner established by Jacob Fowler, Dec. 19, 1805 "Post".

COUNTY SURVEYOR'S BOOKS: Vand. Co. Book B P. 148: James D. Saunders VCS November 30, 1859 "Stone Marked NE 1/4 S30"

Book 1 P. 238: O.B.Pasco WCS Nov. 25, 1865 (Brq. Trees copied from Vand. Book)

Vand. Co. Book C P. 228 Robt. L. Cowan VCS March 25, 1881 "Marked Stone"

Vand. Co. Book D P. 15 Franklin Sours [sp?] VCS Dec. 6, 1887 "Stone by Sanders"

OTHER SURVEYS AND PLATS: Plat of survey by John W. Curry dated 12/30/87 (unrecorded, copy provided by Donald Adler) shows PK nail found.

Location Control Route Survey for SR 66 (Doc. 1997R-007361) tied in a brass plug in the median-side concrete shoulder of East-bound SR 66. The section ties for this project were done in 1990. The plug had been constructed under INDOT Proj. I-164-1 (1986). Road plans for that project identified the P.I. as being the section corner.

The 1994 plat of Eagle Crest Subdivision Section 2 (Vand. Co.) shows a brass monument.

The brass plug is known to have been destroyed during subsequent lane additions along SR 66 around 1999. A new (offset) 1" iron pin was placed approximately 18' northerly of the old plug, in the median of S.R. 66.

The 2000 plat of Charlestown Square on the Lake Section I shows ties to the corner (monument not identified).

The Vanderburgh County Surveyor's office provided coordinates (dated 2002) based on ties to new SR 66 monumentation (per route survey provided by EUTS) and on ties to corners in the Eagle Crest Subdivision Section 2.

VERIFICATION OF CORNER POSITION: September, 2002; ties were made to corners in Charlestown Square on the Lake Section I and to survey control points from the 1990 S.R. 66 survey. The former position of the old brass plug was calculated from both sets of ties. The calculated positions agreed within 0.1 foot, and a final adjusted position was calculated. The corner falling within the travel lanes of S.R. 66, the corner itself was not reset; a witness rebar was set which, along with the new 1" iron pin in the median, provides a pair of "straddle points" to mark the corner. No comparison has been made with the calculated coordinates provided by the Vanderburgh County Surveyor's office.

Perry E. Jones 3/13/03

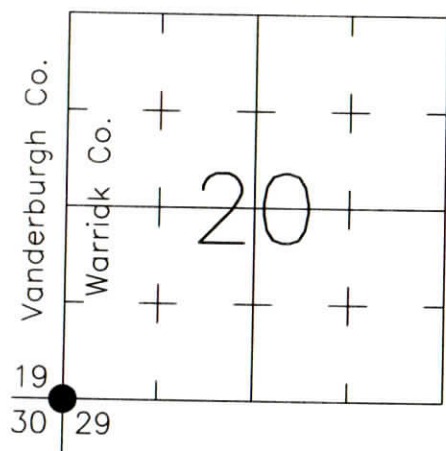
CORNER RECORD
WARRICK COUNTY



DESCRIPTION:
SOUTHWEST CORNER _____
SECTION 20, T. 6 S., R. 9 W.
2nd PRINCIPAL MERIDIAN

WARRICK COUNTY SURVEYOR
KARAN HARGRAVE-BARNHILL

INDICATE CORNER REFERENCED:



MONUMENT TYPE: NO MON. (WITNESS POINTS) FOR NOTES ON CORNER HISTORY SEE REVERSE.

SIZE:
DEPTH/HEIGHT:
REFERENCE TIE DRAWING:

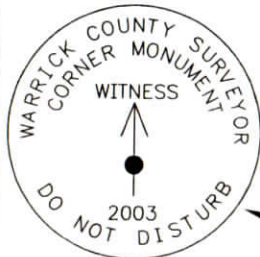
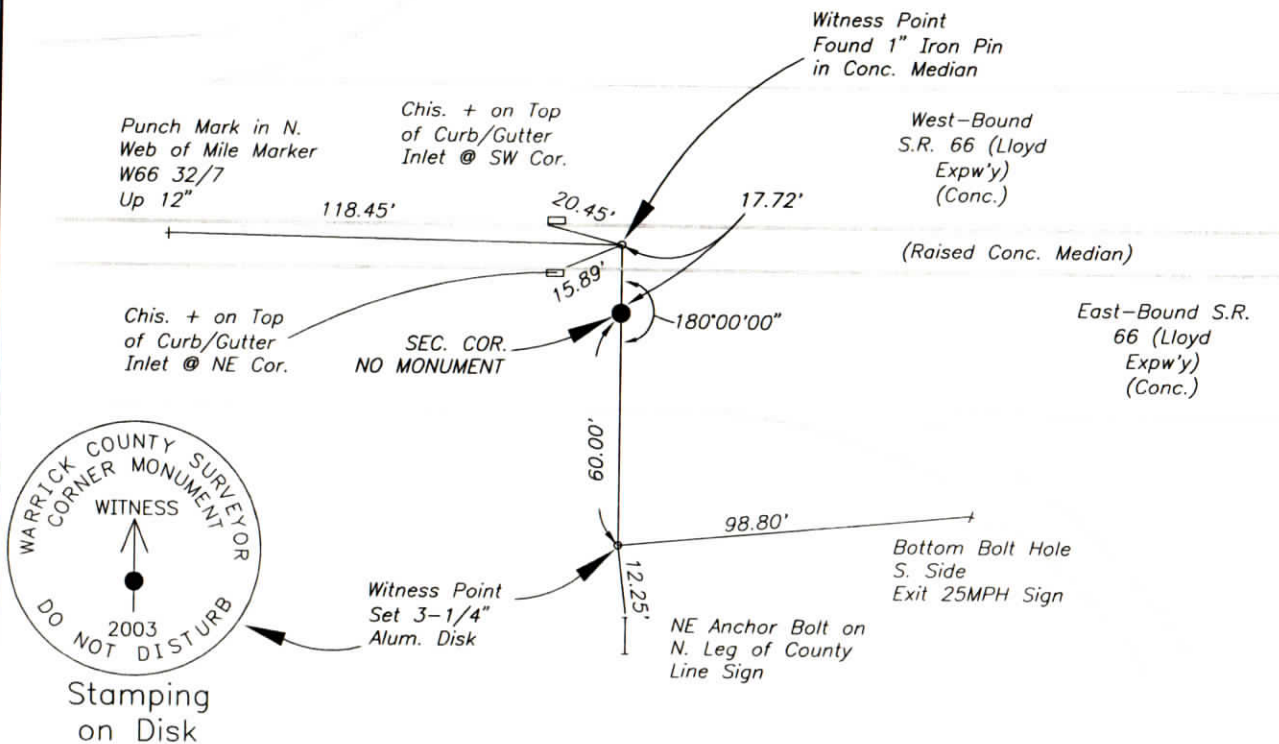
STATE PLANE COORDINATE DATA:
INDIANA WEST ZONE, NAD 83 (1997)
U.S. SURVEY FEET

X
Y

COORDINATES ESTABLISHED BY:

APPROVED BY:

DATE:



REFERENCED BY: R.HAHN/J.CRANE

APPROVED BY: P.JONES, RLS#9600016

DATE: 3/11/03

DATE: 7/29/03

CORNER FILE CODE:
T6S-R9W-R-05

CORNER HISTORY:

CORNER FILE CODE:
T6S-R9W-R-05

ORIGINAL USPLS SURVEY: Corner established by Jacob Fowler, Dec. 19, 1805 "Post".

COUNTY SURVEYOR'S BOOKS: Vand. Co. Book B P. 148: James D. Saunders VCS November 30, 1859 "Stone Marked NE 1/4 S30"

Book 1 P. 238: O.B.Pasco WCS Nov. 25, 1865 (Brq. Trees copied from Vand. Book)

Vand. Co. Book C P. 228 Robt. L. Cowan VCS March 25, 1881 "Marked Stone"

Vand. Co. Book D P. 15 Franklin Sours [sp?] VCS Dec. 6, 1887 "Stone by Sanders"

OTHER SURVEYS AND PLATS: Plat of survey by John W. Curry dated 12/30/87 (unrecorded, copy provided by Donald Adler) shows PK nail found.

Location Control Route Survey for SR 66 (Doc. 1997R-007361) tied in a brass plug in the median-side concrete shoulder of East-bound SR 66. The section ties for this project were done in 1990. The plug had been constructed under INDOT Proj. I-164-1 (1986). Road plans for that project identified the P.I. as being the section corner.

The 1994 plat of Eagle Crest Subdivision Section 2 (Vand. Co.) shows a brass monument.

The brass plug is known to have been destroyed during subsequent lane additions along SR 66 around 1999. A new (offset) 1" iron pin was placed approximately 18' northerly of the old plug, in the median of S.R. 66.

The 2000 plat of Charlestown Square on the Lake Section I shows ties to the corner (monument not identified).

The Vanderburgh County Surveyor's office provided coordinates (dated 2002) based on ties to new SR 66 monumentation (per route survey provided by EUTS) and on ties to corners in the Eagle Crest Subdivision Section 2.

VERIFICATION OF CORNER POSITION: September, 2002; ties were made to corners in Charlestown Square on the Lake Section I and to survey control points from the 1990 S.R. 66 survey. The former position of the old brass plug was calculated from both sets of ties. The calculated positions agreed within 0.1 foot, and a final adjusted position was calculated. The corner falling within the travel lanes of S.R. 66, the corner itself was not reset; an aluminum witness disk was set which, along with the new 1" iron pin in the median, provides a pair of "straddle points" to mark the corner. No comparison has been made with the calculated coordinates provided by the Vanderburgh County Surveyor's office.

Perry E. Jones 7/29/03

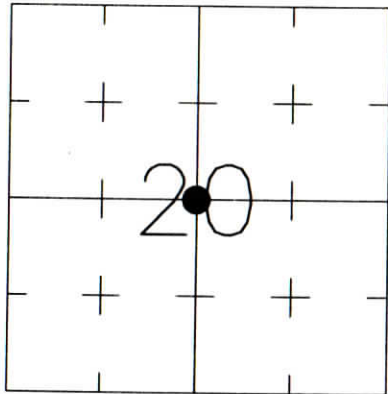
CORNER RECORD
WARRICK COUNTY



DESCRIPTION:
SOUTHWEST CORNER NORTHEAST QUARTER
SECTION 20, T. 6 S., R. 9 W.
2nd PRINCIPLE MERIDIAN

WARRICK COUNTY SURVEYOR
KARAN HARGRAVE-BARNHILL

INDICATE CORNER REFERENCED:



MONUMENT TYPE: IRON PIPE
SIZE: 1" O.D.
DEPTH/HEIGHT: 4" BELOW PVMT. GRADE
REFERENCE TIE DRAWING:

FOR NOTES ON CORNER HISTORY SEE REVERSE.

STATE PLANE COORDINATE DATA:
INDIANA WEST ZONE, NAD 83 (1997)
U.S. SURVEY FEET

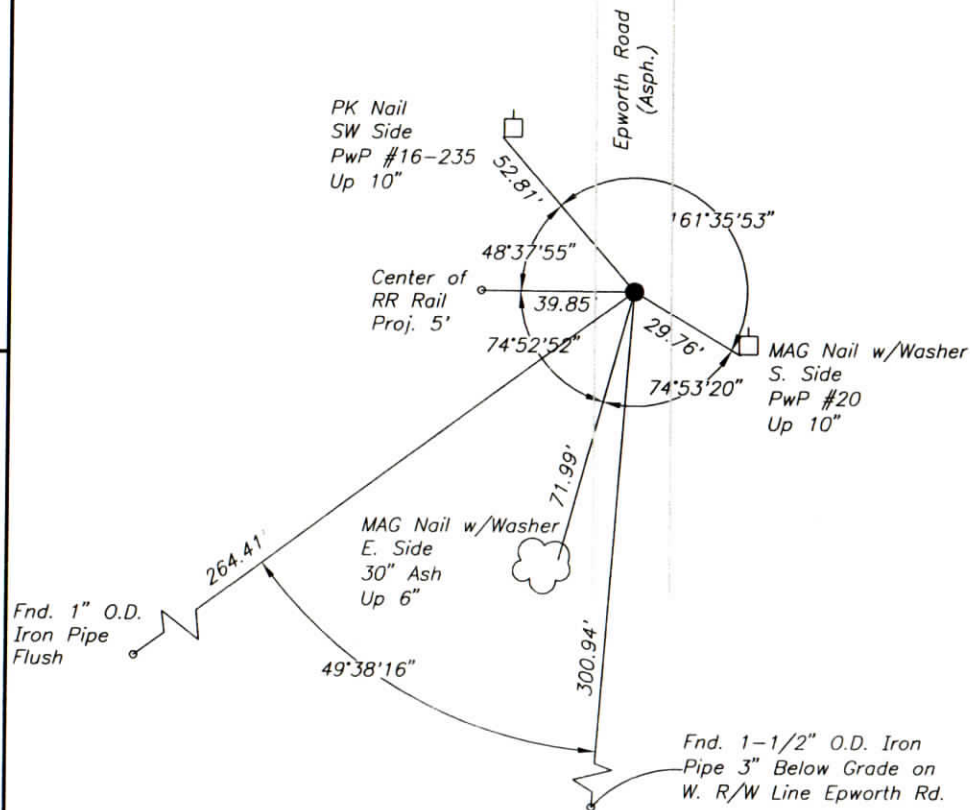
X _____

Y _____

COORDINATES ESTABLISHED BY:

APPROVED BY:

DATE:



REFERENCED BY: D.DREES/K.KLEIN
& R.HAHN/J.CRANE
APPROVED BY: P.JONES, RLS#9600016

DATE: 8/26/02
3/6/03
DATE: 3/17/03

CORNER FILE CODE:
T6S-R9W-P-07

CORNER HISTORY:

CORNER FILE CODE:
T6S-R9W-P-07

ORIGINAL USPLS SURVEY: (Center of Section not monumented by USPLS Survey)

COUNTY SURVEYOR'S BOOKS: Book 2 P. 57: O.B.Pasco WCS Nov. 30, 1888 "Corner Stone Reset"

OTHER SURVEYS AND PLATS: "Corner Code System" card shows undated reference to PK nail.

A description of a 0.449-acre tract in Deed File 3, Card 9610 commences from the corner and calls out monuments at the tract corners "according to the plat of survey by Sam Biggerstaff" ... "dated 30 October 1984". The description does not identify a monument at the corner.

Plat of survey by John W. Curry dated 12/30/87 (unrecorded, copy provided by Donald Adler) shows a straight line from the north quarter corner of Sec. 20 to the south quarter corner, with nothing shown at the center of section.

A 1" O.D. iron pipe marking the apparent corner was tied in to the SR 66 Route Survey (Bernardin-Lochmueller & Assoc. 1990) but was not referenced and was not shown on the recorded survey.

VERIFICATION OF CORNER POSITION: September, 2002: The 1" O.D. Iron Pipe shown was found in place, in the approx. centerline of Epworth Road and consistent with apparent possession lines running east and west. The power pole marked #20 shown southeasterly of the corner is a newly placed pole. An existing hole where an old pole stood matches reasonably well with the distance of 27.71' to T.P. #20 as shown on the old Corner Code System reference card. March, 2003: ties were made to survey control points from the S.R. 66 survey which confirm that the pipe shown is the same pipe as was found in 1990. Ties were also made to two of the monuments called for in Deed File 3, Card 9610 which indicate a corner position approximately 3' south of the pipe shown. Since the pipe agrees well with possession lines and the old reference, it was accepted as the apparent corner despite the 3' discrepancy; if a copy of the 1984 Biggerstaff survey can be found, it may help resolve this discrepancy.

Perry E. Jones 3/17/03

CORNER RECORD
WARRICK COUNTY

DESCRIPTION :

NE CORNER ~~NW~~ ^{NW/4} ~~NE~~ ?

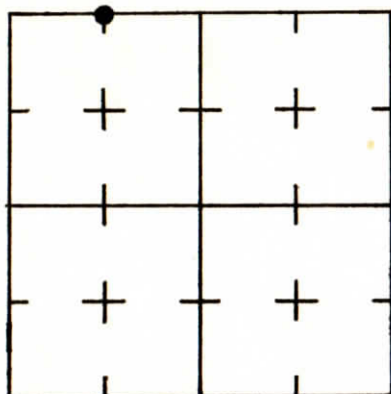
SECTION 20, T. 6 S. R. 9 W.

2nd PRINCIPAL MERIDIAN

WARRICK COUNTY SURVEYOR
MICHAEL F. FELDBUSCH, L.S.

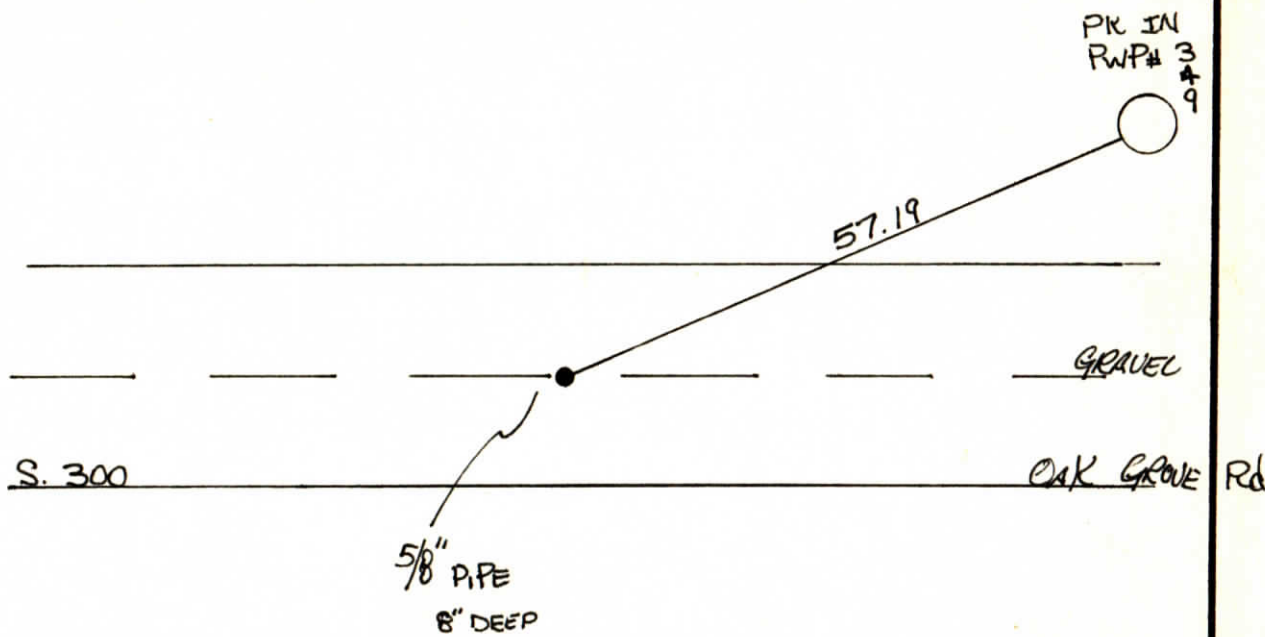


INDICATE CORNER REFERENCED



DESCRIBE CORNER REFERENCED

N.V.



STATE PLANE COORDINATE DATA

INDIANA ZONE: WEST

X _____

Y _____

ESTABLISHED BY:

APPROVED BY

DATE

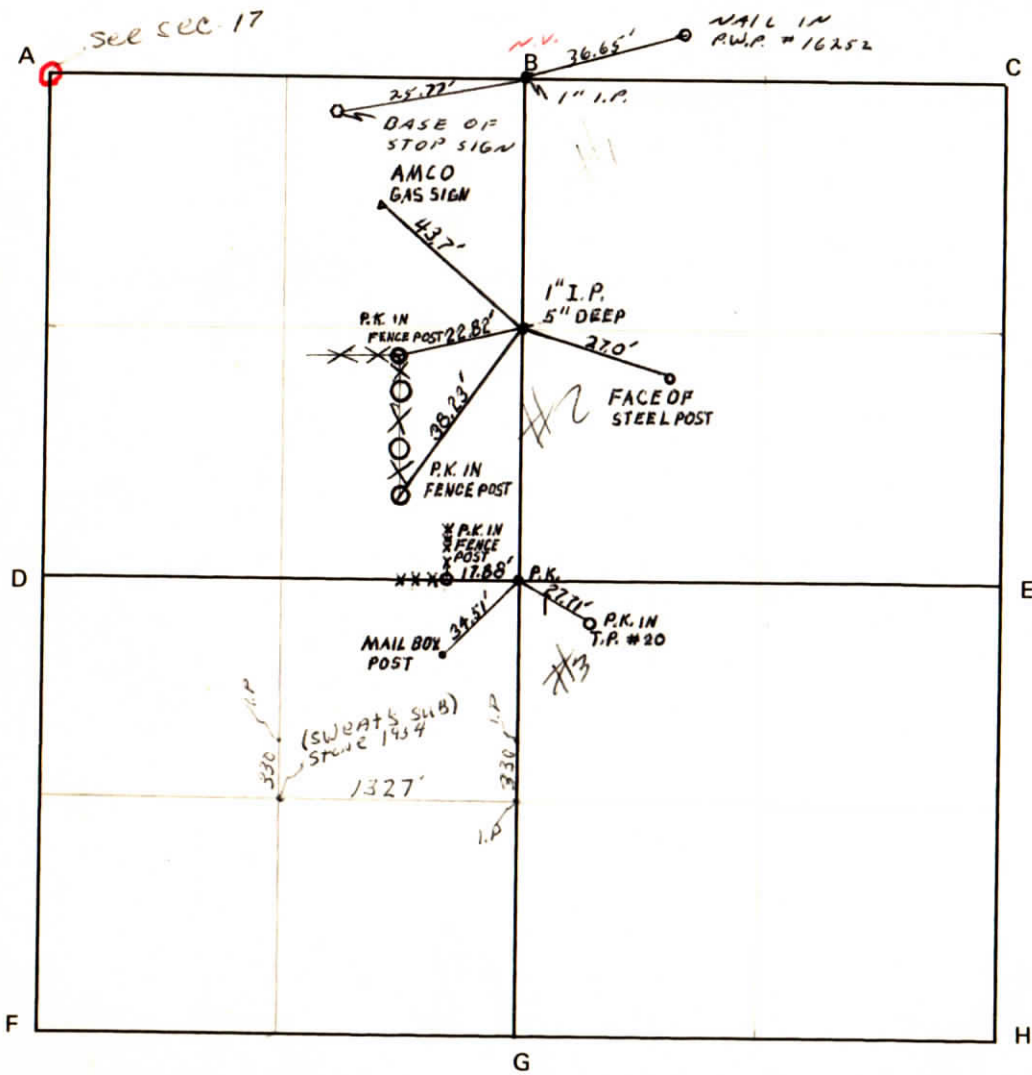
REFERENCED BY:

DATE

Ang Beck

6-2-83

CORNER CODE SYSTEM Warrick County



NOTES

RECORD OF SECTION CORNERS

Warrick County

Section 20 Township 6 South Range 9 West 2nd Principle Meridian _____

Date	Cor	Location	Description of		Distance from Corner	Bearing from Corner (North Assumed)	Cond	Check By	Remarks
			Monument	Reference					
12-23-74	A	NW cor.	1-3/4" iron pipe	1) Post 2) Post	15.6' 23.7'	N 00° S 00°	poor	GAT	Found in place Post of Co. line sign Post of Co. line sign

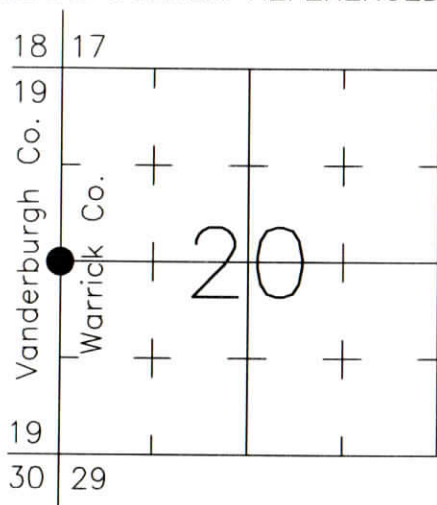
CORNER RECORD WARRICK COUNTY



DESCRIPTION:
SOUTHWEST CORNER NORTHWEST QUARTER
 SECTION 20, T. 6 S., R. 9 W.
 2nd PRINCIPLE MERIDIAN

WARRICK COUNTY SURVEYOR
 KARAN HARGRAVE-BARNHILL

INDICATE CORNER REFERENCED:



STATE PLANE COORDINATE DATA:
 INDIANA WEST ZONE, NAD 83 (1997)
 U.S. SURVEY FEET

X _____
 Y _____

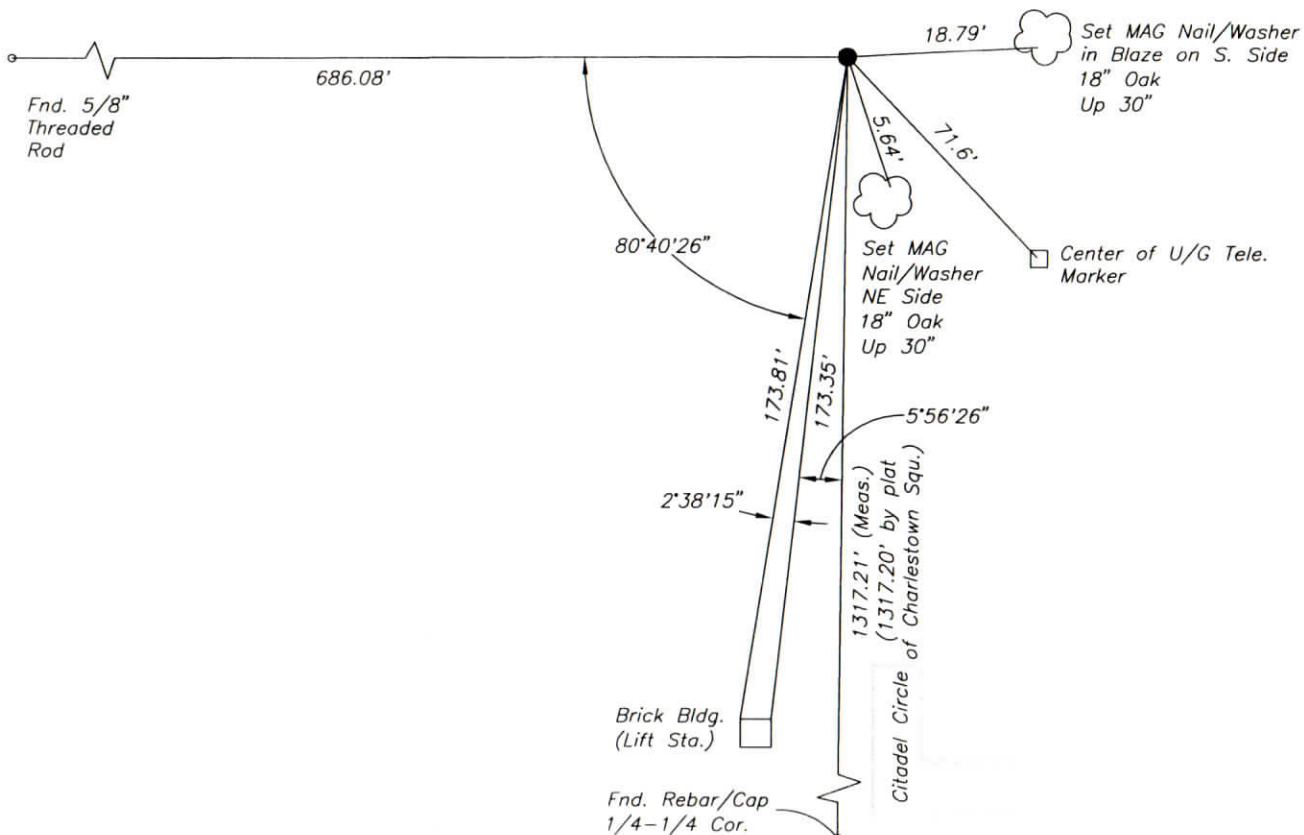
COORDINATES ESTABLISHED BY:

APPROVED BY:

DATE:

MONUMENT TYPE: REBAR
 SIZE: 5/8" DIA.
 DEPTH/HEIGHT: FLUSH WITH EXIST. GROUND
 REFERENCE TIE DRAWING:

FOR NOTES ON CORNER HISTORY SEE REVERSE.



REFERENCED BY: D.DREES/C.BINKLEY
 /M.BRENDEL
 APPROVED BY: P.JONES, RLS#9600016

DATE: 9/3/02
 & 9/16/02
 DATE: 9/26/02

CORNER FILE CODE:
 T6S-R9W-P-05

CORNER HISTORY:

CORNER FILE CODE:
T6S-R9W-P-05

ORIGINAL USPLS SURVEY: Corner established by Jacob Fowler, Dec. 21(?), 1805 "Post".

COUNTY SURVEYOR'S BOOKS: (No entries found which include descriptions of a monument or bearing trees).

OTHER SURVEYS AND PLATS: Vanderburgh County Surveyor's office provided coordinates (dated 2002) for a 5/8" rebar.

Plat of survey by John W. Curry dated 12/30/87 shows "IP Set" (at midpoint of section line).

Plat of Charlestown Square on the Lake Section I (Vand. Co. Doc. 2000R00031606) shows 5/8" iron pin found projecting 1".

VERIFICATION OF CORNER POSITION: September, 2002: The rebar shown was found in place. Measurements to lot corners found in Charlestown Square on the Lake Section I (Vand. Co.) were consistent with plat dimensions.

Perry E. Jones 9/26/02

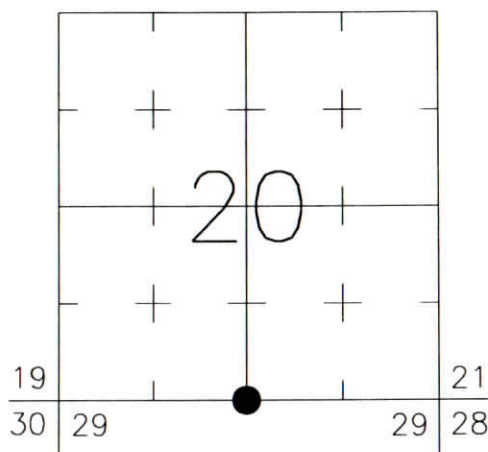
CORNER RECORD WARRICK COUNTY



DESCRIPTION:
 SOUTHWEST CORNER SOUTHEAST QUARTER
 SECTION 20, T. 6 S., R. 9 W.
 2nd PRINCIPAL MERIDIAN

WARRICK COUNTY SURVEYOR
 JAMES NIEMEYER

INDICATE CORNER REFERENCED:



STATE PLANE COORDINATE DATA:
 INDIANA WEST ZONE, NAD 83 (1997)
 U.S. SURVEY FEET

X ---
 Y ---

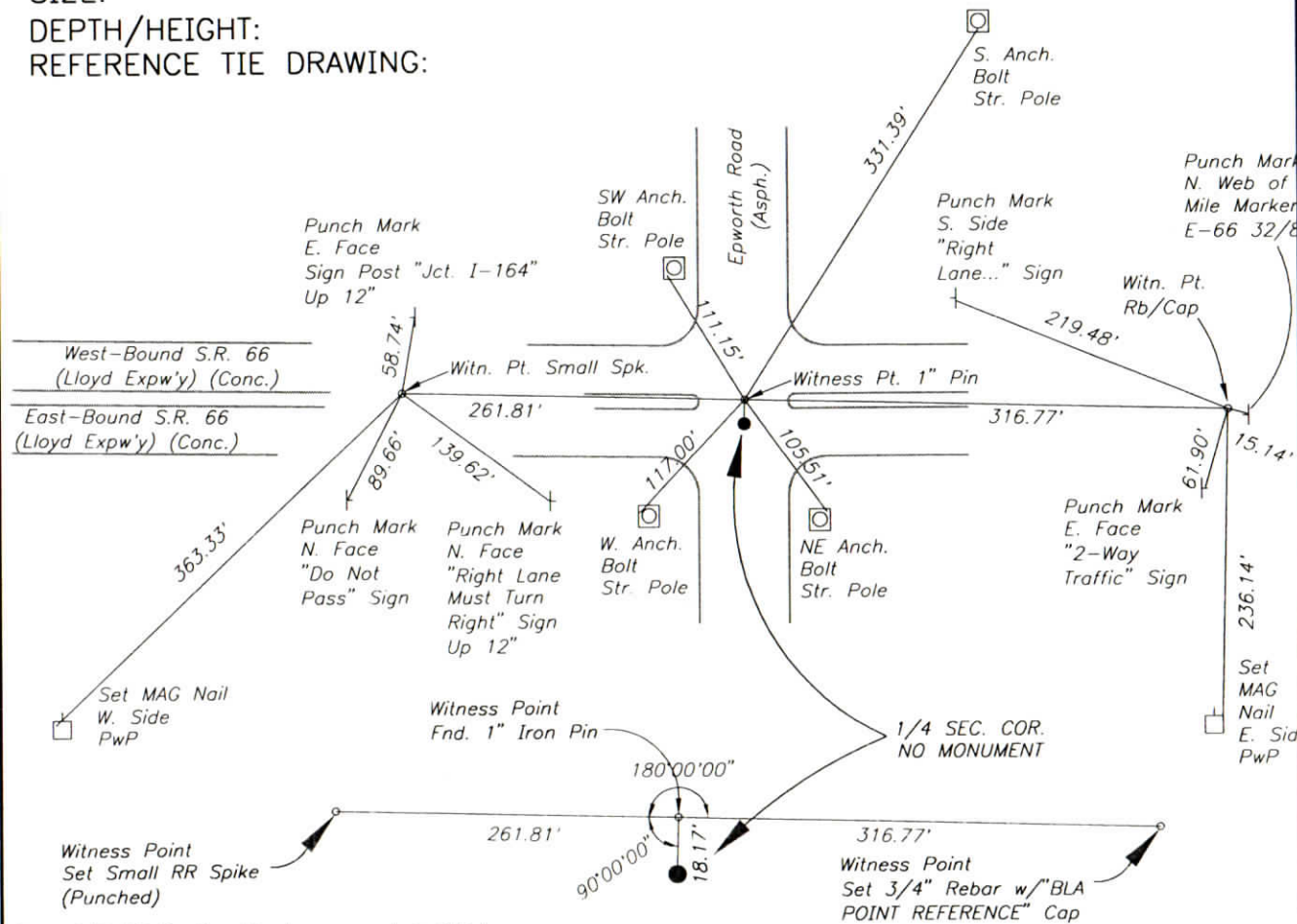
COORDINATES ESTABLISHED BY:

APPROVED BY:

DATE:

MONUMENT TYPE: NO MON. (WITNESS POINTS)
 SIZE:
 DEPTH/HEIGHT:
 REFERENCE TIE DRAWING:

FOR NOTES ON CORNER HISTORY SEE REVERSE.



Rev.: 9/9/05 Section Number corrected. P.E.J.

REFERENCED BY: R.HAHN/J.CRANE

DATE: 3/11/03

APPROVED BY: P.JONES, RLS#9600016

DATE: 3/13/03

CORNER FILE CODE:
 T6S-R9W-R-07

CORNER HISTORY:

CORNER FILE CODE:
T6S-R9W-R-07

ORIGINAL USPLS SURVEY: Corner established by Jacob Fowler, Dec. 19, 1805 "Post".

COUNTY SURVEYOR'S BOOKS: Book 1 P. 57: W.B. Wright WCS November, 1855 (Not identified, Stone presumed)

Book 1 P. 238: O.B.Pasco WCS Nov. 25, 1865 "Stake Set"

OTHER SURVEYS AND PLATS: Plat of survey by John W. Curry dated 12/30/87 (unrecorded, copy provided by Donald Adler) shows PK nail found.

Location Control Route Survey for SR 66 (Doc. 1997R-007361) tied in a 1" pin in monument box. The section ties for this project were done in 1990. The monument box is thought to have been constructed under INDOT Proj. I-164-1 (1986). Road plans for that project identified the P.I. as being the 1/4-section corner.

An Exempt Division by Danny K. Leek dated October 22, 1998 showed the iron pin in monument box.

The monument box is known to have been destroyed during lane additions along SR 66 around 1999. A new 1" iron pin (alignment point) was set 18.18' north of the monument box's location.

VERIFICATION OF CORNER POSITION: September, 2002; the former location of the old monument box was re-established from ties to survey control points from the 1990 S.R. 66 survey. March, 2003; falling within the present travel lanes of S.R. 66, the corner itself was not reset; two witness points were set in addition to the new 1" iron pin in the intersection. By occupying the 1" iron pin a 90° angle can be turned from either of the other witnesses to recreate the calculated point at the distance shown.

Perry E. Jones 3/13/03